

CDH13 / H cadherin (aa285-297) Antibody (internal region)
Peptide-affinity purified goat antibody
Catalog # AF4026a

Specification

CDH13 / H cadherin (aa285-297) Antibody (internal region) - Product Information

Application	WB
Primary Accession	P55290
Other Accession	NP_001248.1 , NP_001207417.1 , NP_001207418.1 , NP_001207419.1 , 1012 , 12554 (mouse) , 192248 (rat)
Reactivity	Human
Predicted	Mouse, Rat, Dog
Host	Goat
Clonality	Polyclonal
Concentration	0.5 mg/ml
Isotype	IgG
Calculated MW	78287

CDH13 / H cadherin (aa285-297) Antibody (internal region) - Additional Information

Gene ID 1012

Other Names

Cadherin-13, Heart cadherin, H-cadherin, P105, Truncated cadherin, T-cad, T-cadherin, CDH13, CDHH

Format

0.5 mg/ml in Tris saline, 0.02% sodium azide, pH7.3 with 0.5% bovine serum albumin

Storage

Maintain refrigerated at 2-8°C for up to 6 months. For long term storage store at -20°C in small aliquots to prevent freeze-thaw cycles.

Precautions

CDH13 / H cadherin (aa285-297) Antibody (internal region) is for research use only and not for use in diagnostic or therapeutic procedures.

CDH13 / H cadherin (aa285-297) Antibody (internal region) - Protein Information

Name CDH13

Synonyms CDHH

Function

Cadherins are calcium-dependent cell adhesion proteins. They preferentially interact with themselves in a homophilic manner in connecting cells; cadherins may thus contribute to the

sorting of heterogeneous cell types. May act as a negative regulator of neural cell growth.

Cellular Location

Cell membrane {ECO:0000250|UniProtKB:Q9WTR5}; Lipid-anchor, GPI-anchor. Cytoplasm {ECO:0000250|UniProtKB:Q9WTR5}

Tissue Location

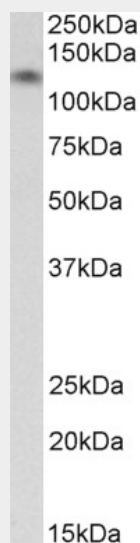
Highly expressed in heart. In the CNS, expressed in cerebral cortex, medulla, hippocampus, amygdala, thalamus and substantia nigra. No expression detected in cerebellum or spinal cord

CDH13 / H cadherin (aa285-297) Antibody (internal region) - Protocols

Provided below are standard protocols that you may find useful for product applications.

- [Western Blot](#)
- [Blocking Peptides](#)
- [Dot Blot](#)
- [Immunohistochemistry](#)
- [Immunofluorescence](#)
- [Immunoprecipitation](#)
- [Flow Cytometry](#)
- [Cell Culture](#)

CDH13 / H cadherin (aa285-297) Antibody (internal region) - Images



AF4026a (0.03 µg/ml) staining of Human Heart lysate (35 µg protein in RIPA buffer). Primary incubation was 1 hour. Detected by chemiluminescence.

CDH13 / H cadherin (aa285-297) Antibody (internal region) - Background

This antibody is expected to recognize isoform 1, 2, 3 and 4 (NP_001248.1; NP_001207417.1; NP_001207418.1; NP_001207419.1).

CDH13 / H cadherin (aa285-297) Antibody (internal region) - References

A variant upstream of the CDH13 adiponectin receptor gene and metabolic syndrome in Swedes. Fava C, Danese E, Montagnana M, Sjögren M, Almgren P, Guidi GC, Hedblad B, Engström G, Lechi A,

Minuz P, Melander O. Am J Cardiol. 2011 Nov 15;108(10):1432-7. PMID: 21872196