

**EEF1E1 / AIMP3 / p18 Antibody (internal region, near N-Term)**  
Peptide-affinity purified goat antibody  
Catalog # AF4013a

**Specification**

---

**EEF1E1 / AIMP3 / p18 Antibody (internal region, near N-Term) - Product Information**

Application	WB
Primary Accession	<a href="#">O43324</a>
Other Accession	<a href="#">NP_004271.1</a> , <a href="#">NP_001129122.1</a> , <a href="#">9521</a>
Reactivity	Human
Predicted	Pig, Dog
Host	Goat
Clonality	Polyclonal
Concentration	0.5 mg/ml
Isotype	IgG
Calculated MW	19811

**EEF1E1 / AIMP3 / p18 Antibody (internal region, near N-Term) - Additional Information**

Gene ID 9521

**Other Names**

Eukaryotic translation elongation factor 1 epsilon-1, Aminoacyl tRNA synthetase complex-interacting multifunctional protein 3, Elongation factor p18, Multisynthase complex auxiliary component p18, EEF1E1, AIMP3, P18

**Format**

0.5 mg/ml in Tris saline, 0.02% sodium azide, pH7.3 with 0.5% bovine serum albumin

**Storage**

Maintain refrigerated at 2-8°C for up to 6 months. For long term storage store at -20°C in small aliquots to prevent freeze-thaw cycles.

**Precautions**

EEF1E1 / AIMP3 / p18 Antibody (internal region, near N-Term) is for research use only and not for use in diagnostic or therapeutic procedures.

**EEF1E1 / AIMP3 / p18 Antibody (internal region, near N-Term) - Protein Information**

Name EEF1E1

Synonyms AIMP3, P18 {ECO:0000303|PubMed:15680327}

**Function**

Positive modulator of ATM response to DNA damage.

**Cellular Location**

Cytoplasm. Cytoplasm, cytosol. Nucleus. Note=Cytoplasmic under growth arrest conditions. Translocated into the nucleus when growth resumes (S phase) and following DNA damage

#### Tissue Location

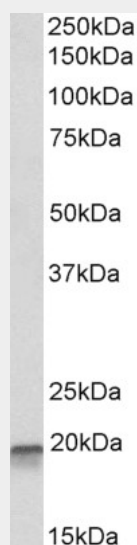
Down-regulated in various cancer tissues.

#### EEF1E1 / AIMP3 / p18 Antibody (internal region, near N-Term) - Protocols

Provided below are standard protocols that you may find useful for product applications.

- [Western Blot](#)
- [Blocking Peptides](#)
- [Dot Blot](#)
- [Immunohistochemistry](#)
- [Immunofluorescence](#)
- [Immunoprecipitation](#)
- [Flow Cytometry](#)
- [Cell Culture](#)

#### EEF1E1 / AIMP3 / p18 Antibody (internal region, near N-Term) - Images



AF4013a (0.1 µg/ml) staining of K562 lysate (35 µg protein in RIPA buffer). Primary incubation was 1 hour. Detected by chemiluminescence.

#### EEF1E1 / AIMP3 / p18 Antibody (internal region, near N-Term) - Background

This antibody is expected to recognize both reported isoforms (NP\_004271.1; NP\_001129122.1).

#### EEF1E1 / AIMP3 / p18 Antibody (internal region, near N-Term) - References

Dual role of methionyl-tRNA synthetase in the regulation of translation and tumor suppressor activity of aminoacyl-tRNA synthetase-interacting multifunctional protein-3. Kwon NH, Kang T, Lee JY, Kim HH, Kim HR, Hong J, Oh YS, Han JM, Ku MJ, Lee SY, Kim S. Proc Natl Acad Sci U S A. 2011 Dec 6;108(49):19635-40. PMID: 22106287