

**CREB3 (aa76-87) Antibody (internal region)**  
Peptide-affinity purified goat antibody  
Catalog # AF4009a

**Specification**

---

**CREB3 (aa76-87) Antibody (internal region) - Product Information**

|                   |   |
|-------------------|---|
| Application       | WB  |
| Primary Accession | <a href="#">O43889</a>                              |
| Other Accession   | <a href="#">NP_006359.3</a> , <a href="#">10488</a> |
| Reactivity        | Human   |
| Host              | Goat  |
| Clonality         | Polyclonal  |
| Concentration     | 0.5 mg/ml   |
| Isotype           | IgG   |
| Calculated MW     | 41379   |

**CREB3 (aa76-87) Antibody (internal region) - Additional Information**

**Gene ID** 10488

**Other Names**

Cyclic AMP-responsive element-binding protein 3, CREB-3, cAMP-responsive element-binding protein 3, Leucine zipper protein, Luman, Transcription factor LZIP-alpha, Processed cyclic AMP-responsive element-binding protein 3, N-terminal Luman, Transcriptionally active form, CREB3, LZIP

**Format**

0.5 mg/ml in Tris saline, 0.02% sodium azide, pH7.3 with 0.5% bovine serum albumin

**Storage**

Maintain refrigerated at 2-8°C for up to 6 months. For long term storage store at -20°C in small aliquots to prevent freeze-thaw cycles.

**Precautions**

CREB3 (aa76-87) Antibody (internal region) is for research use only and not for use in diagnostic or therapeutic procedures.

**CREB3 (aa76-87) Antibody (internal region) - Protein Information**

**Name** CREB3

**Synonyms** LZIP

**Function**

Endoplasmic reticulum (ER)-bound sequence-specific transcription factor that directly binds DNA and activates transcription (PubMed: <http://www.uniprot.org/citations/10984507> target="\_blank">10984507</a>, PubMed: <http://www.uniprot.org/citations/15845366>)

target="\_blank">15845366</a>, PubMed:<a href="http://www.uniprot.org/citations/16940180" target="\_blank">16940180</a>, PubMed:<a href="http://www.uniprot.org/citations/19779205" target="\_blank">19779205</a>, PubMed:<a href="http://www.uniprot.org/citations/9271389" target="\_blank">9271389</a>). Plays a role in the unfolded protein response (UPR), promoting cell survival versus ER stress-induced apoptotic cell death (PubMed:<a href="http://www.uniprot.org/citations/15845366" target="\_blank">15845366</a>, PubMed:<a href="http://www.uniprot.org/citations/16940180" target="\_blank">16940180</a>). Also involved in cell proliferation, migration and differentiation, tumor suppression and inflammatory gene expression. Acts as a positive regulator of LKN- 1/CCL15-induced chemotaxis signaling of leukocyte cell migration (PubMed:<a href="http://www.uniprot.org/citations/15001559" target="\_blank">15001559</a>, PubMed:<a href="http://www.uniprot.org/citations/17296613" target="\_blank">17296613</a>, PubMed:<a href="http://www.uniprot.org/citations/19779205" target="\_blank">19779205</a>). Associates with chromatin to the HERPUD1 promoter (PubMed:<a href="http://www.uniprot.org/citations/16940180" target="\_blank">16940180</a>). Also induces transcriptional activation of chemokine receptors (PubMed:<a href="http://www.uniprot.org/citations/17296613" target="\_blank">17296613</a>, PubMed:<a href="http://www.uniprot.org/citations/18587271" target="\_blank">18587271</a>).

### Cellular Location

[Isoform 1]: Endoplasmic reticulum membrane; Single-pass type II membrane protein {ECO:0000255, ECO:0000269|PubMed:12138176}. Golgi apparatus. Note=Colocalizes with HCFC1 in neuronal cell bodies of the trigeminal ganglia (PubMed:10623756). Colocalizes with DCSTAMP in the ER membrane of immature dendritic cell (DC) (PubMed:20546900). Colocalizes with CANX, CCR1, HCFC1 in the ER membrane (PubMed:10623756). [Isoform 2]: Nucleus. Cytoplasm Note=Predominantly in the nucleus (PubMed:19779205). Not associated with membranes (PubMed:19779205).

### Tissue Location

Ubiquitously expressed (PubMed:19779205, PubMed:9271389). Expressed in dendritic cells (DC). Weakly expressed in monocytes (at protein level) (PubMed:20546900)

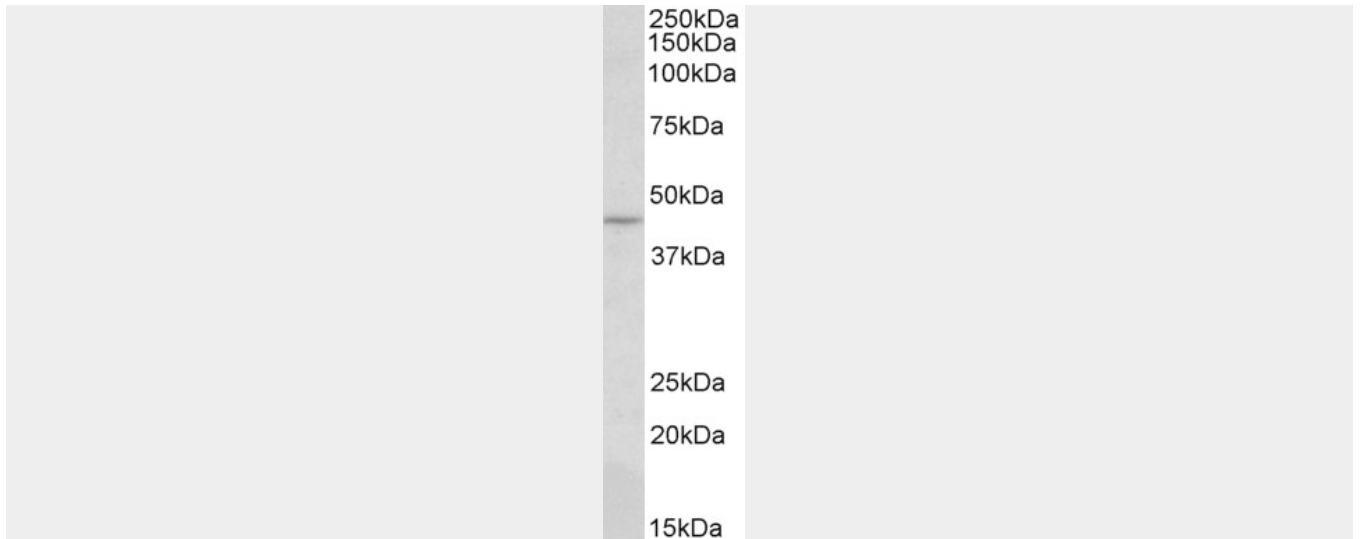
## CREB3 (aa76-87) Antibody (internal region) - Protocols

Provided below are standard protocols that you may find useful for product applications.

- [Western Blot](#)
- [Blocking Peptides](#)
- [Dot Blot](#)
- [Immunohistochemistry](#)
- [Immunofluorescence](#)
- [Immunoprecipitation](#)
- [Flow Cytometry](#)
- [Cell Culture](#)

## CREB3 (aa76-87) Antibody (internal region) - Images





AF4009a (0.3  $\mu\text{g/ml}$ ) staining of HepG2 lysate (35  $\mu\text{g}$  protein in RIPA buffer). Primary incubation was 1 hour. Detected by chemiluminescence.

#### **CREB3 (aa76-87) Antibody (internal region) - References**

HDAC3 selectively represses CREB3-mediated transcription and migration of metastatic breast cancer cells. Kim HC, Choi KC, Choi HK, Kang HB, Kim MJ, Lee YH, Lee OH, Lee J, Kim YJ, Jun W, Jeong JW, Yoon HG. Cellular and molecular life sciences : CMLS 2010 Oct 67 (20): 3499-510. PMID: 20473547