

CREB1 (aa96-109) Antibody (internal region)
Peptide-affinity purified goat antibody
Catalog # AF4008a**Specification**

CREB1 (aa96-109) Antibody (internal region) - Product Information

Application	WB
Primary Accession	P16220
Other Accession	NP_004370.1 , NP_604391.1 , 1385 , 12912 (mouse)
Reactivity	Human, Mouse
Predicted	Pig, Dog
Host	Goat
Clonality	Polyclonal
Concentration	0.5 mg/ml
Isotype	IgG
Calculated MW	35136

CREB1 (aa96-109) Antibody (internal region) - Additional Information**Gene ID** 1385**Other Names**

Cyclic AMP-responsive element-binding protein 1, CREB-1, cAMP-responsive element-binding protein 1, CREB1

Format

0.5 mg/ml in Tris saline, 0.02% sodium azide, pH7.3 with 0.5% bovine serum albumin

Storage

Maintain refrigerated at 2-8°C for up to 6 months. For long term storage store at -20°C in small aliquots to prevent freeze-thaw cycles.

Precautions

CREB1 (aa96-109) Antibody (internal region) is for research use only and not for use in diagnostic or therapeutic procedures.

CREB1 (aa96-109) Antibody (internal region) - Protein Information**Name** CREB1**Function**

Phosphorylation-dependent transcription factor that stimulates transcription upon binding to the DNA cAMP response element (CRE), a sequence present in many viral and cellular promoters (By similarity). Transcription activation is enhanced by the TORC coactivators which act independently of Ser-119 phosphorylation (PubMed:14536081). Involved in different cellular processes including the

synchronization of circadian rhythmicity and the differentiation of adipose cells (By similarity).
Regulates the expression of apoptotic and inflammatory response factors in cardiomyocytes in response to ERFE-mediated activation of AKT signaling (By similarity).

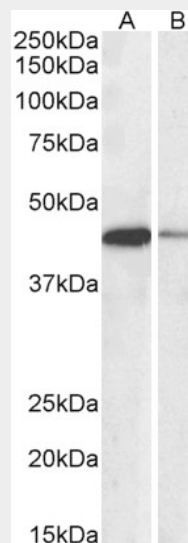
Cellular Location

Nucleus {ECO:0000255|PROSITE-ProRule:PRU00312, ECO:0000255|PROSITE-ProRule:PRU00978, ECO:0000269|PubMed:12552083}

CREB1 (aa96-109) Antibody (internal region) - Protocols

Provided below are standard protocols that you may find useful for product applications.

- [Western Blot](#)
- [Blocking Peptides](#)
- [Dot Blot](#)
- [Immunohistochemistry](#)
- [Immunofluorescence](#)
- [Immunoprecipitation](#)
- [Flow Cytometry](#)
- [Cell Culture](#)

CREB1 (aa96-109) Antibody (internal region) - Images

AF4008a (0.1 µg/ml) staining of Jurkat (A) and NIH3T3 (B) nuclear lysates (35 µg protein in RIPA buffer). Primary incubation was 1 hour. Detected by chemiluminescence.

CREB1 (aa96-109) Antibody (internal region) - Background

This antibody is expected to recognize both reported isoforms (NP_004370.1; NP_604391.1).

CREB1 (aa96-109) Antibody (internal region) - References

Layer-specific CREB target gene induction in human neocortical epilepsy. Beaumont TL, Yao B, Shah A, Kapatos G, Loeb JA. The Journal of neuroscience : the official journal of the Society for Neuroscience 2012 Oct 32 (41): 14389-401. PMID: 23055509