

BCAR1 Antibody (internal region)
Peptide-affinity purified goat antibody
Catalog # AF4000a

Specification

BCAR1 Antibody (internal region) - Product Information

Application	IHC, WB
Primary Accession	P56945
Other Accession	NP_001164185.1 , NP_001164186.1 , NP_001164187.1 , NP_001164188.1 , NP_001164189.1 , NP_055382.2 , NP_001164190.1 , NP_001164191.1 , NP_001164192.1 , 9564 , 12927 (mouse) , 25414 (rat)
Reactivity	Human
Predicted	Mouse, Rat, Dog
Host	Goat
Clonality	Polyclonal
Concentration	0.5 mg/ml
Isotype	IgG
Calculated MW	93372

BCAR1 Antibody (internal region) - Additional Information

Gene ID 9564

Other Names

Breast cancer anti-estrogen resistance protein 1, CRK-associated substrate, Cas scaffolding protein family member 1, p130cas, BCAR1, CAS, CASS1, CRKAS

Format

0.5 mg/ml in Tris saline, 0.02% sodium azide, pH7.3 with 0.5% bovine serum albumin

Storage

Maintain refrigerated at 2-8°C for up to 6 months. For long term storage store at -20°C in small aliquots to prevent freeze-thaw cycles.

Precautions

BCAR1 Antibody (internal region) is for research use only and not for use in diagnostic or therapeutic procedures.

BCAR1 Antibody (internal region) - Protein Information

Name BCAR1

Synonyms CAS, CASS1, CRKAS

Function

Docking protein which plays a central coordinating role for tyrosine kinase-based signaling related to cell adhesion (PubMed:12432078, PubMed:12832404). Implicated in induction of cell migration and cell branching (PubMed:12432078, PubMed:12832404, PubMed:17038317). Involved in the BCAR3-mediated inhibition of TGF β signaling (By similarity).

Cellular Location

Cell junction, focal adhesion. Cytoplasm Cell projection, axon {ECO:0000250|UniProtKB:Q61140} Note=Unphosphorylated form localizes in the cytoplasm (By similarity) Localizes to focal adhesion sites following integrin engagement (By similarity). {ECO:0000250|UniProtKB:Q61140}

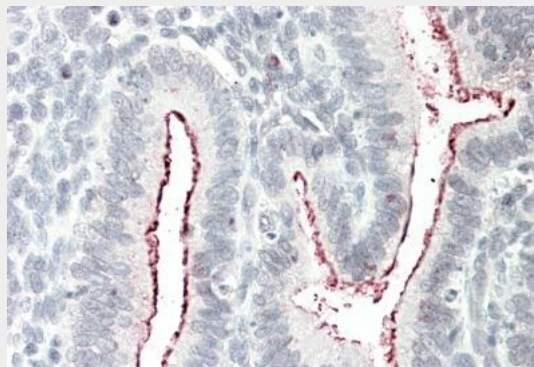
Tissue Location

Expressed in B-cells (at protein level) (PubMed:9020138). Widely expressed with an abundant expression in the testis (PubMed:10639512). Low level of expression seen in the liver, thymus, and peripheral blood leukocytes (PubMed:10639512)

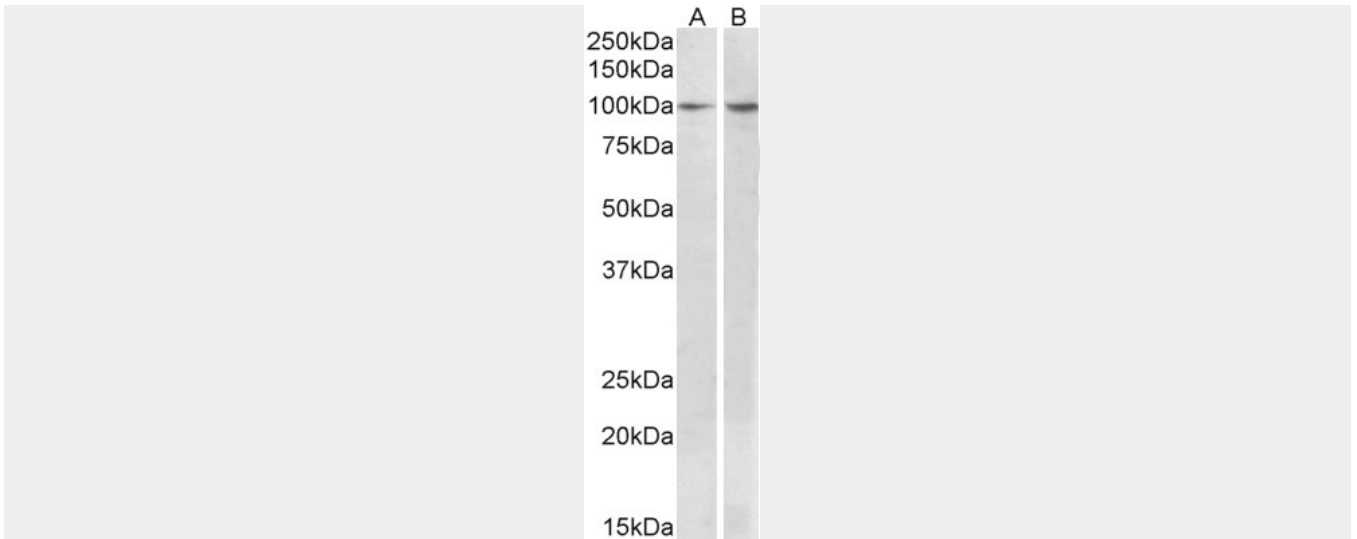
BCAR1 Antibody (internal region) - Protocols

Provided below are standard protocols that you may find useful for product applications.

- [Western Blot](#)
- [Blocking Peptides](#)
- [Dot Blot](#)
- [Immunohistochemistry](#)
- [Immunofluorescence](#)
- [Immunoprecipitation](#)
- [Flow Cytometry](#)
- [Cell Culture](#)

BCAR1 Antibody (internal region) - Images

AF4000a (5 μ g/ml) staining of paraffin embedded Human Uterus. Steamed antigen retrieval with citrate buffer pH 6, AP-staining.



AF4000a (1 $\mu\text{g/ml}$) staining of MCF7 (A) and Human Breast cancer (B) lysates (35 μg protein in RIPA buffer). Primary incubation was 1 hour. Detected by chemiluminescence.

BCAR1 Antibody (internal region) - Background

This antibody is expected to recognize reported isoforms 1, 2, 3, 5, 6 and 7.

BCAR1 Antibody (internal region) - References

BCAR1 protein plays important roles in carcinogenesis and predicts poor prognosis in non-small-cell lung cancer. Huang W, Deng B, Wang RW, Tan QY, He Y, Jiang YG, Zhou JH. PloS one 2012 7 (4): e36124. PMID: 22558353