

**ATF6 (aa437-449) Antibody (internal region)**  
Peptide-affinity purified goat antibody  
Catalog # AF3978a**Specification**

---

**ATF6 (aa437-449) Antibody (internal region) - Product Information**

Application	WB
Primary Accession	<a href="#">P18850</a>
Other Accession	<a href="#">NP_031374.2</a> , <a href="#">22926</a> , <a href="#">304962 (rat)</a>
Reactivity	Human
Predicted	Rat, Pig, Dog
Host	Goat
Clonality	Polyclonal
Concentration	0.5 mg/ml
Isotype	IgG
Calculated MW	74585

**ATF6 (aa437-449) Antibody (internal region) - Additional Information**

Gene ID 22926

**Other Names**

Cyclic AMP-dependent transcription factor ATF-6 alpha, cAMP-dependent transcription factor ATF-6 alpha, Activating transcription factor 6 alpha, ATF6-alpha, Processed cyclic AMP-dependent transcription factor ATF-6 alpha, ATF6

**Format**

0.5 mg/ml in Tris saline, 0.02% sodium azide, pH7.3 with 0.5% bovine serum albumin

**Storage**

Maintain refrigerated at 2-8°C for up to 6 months. For long term storage store at -20°C in small aliquots to prevent freeze-thaw cycles.

**Precautions**

ATF6 (aa437-449) Antibody (internal region) is for research use only and not for use in diagnostic or therapeutic procedures.

**ATF6 (aa437-449) Antibody (internal region) - Protein Information**

Name ATF6

**Function**

[Cyclic AMP-dependent transcription factor ATF-6 alpha]: Precursor of the transcription factor form (Processed cyclic AMP- dependent transcription factor ATF-6 alpha), which is embedded in the endoplasmic reticulum membrane (PubMed:<a href="http://www.uniprot.org/citations/10564271" target="\_blank">10564271</a>, PubMed:<a href="http://www.uniprot.org/citations/11158310" target="\_blank">11158310</a>, PubMed:<a href="http://www.uniprot.org/citations/11779464" target="\_blank">11779464</a>)

target="\_blank">11779464</a>). Endoplasmic reticulum stress promotes processing of this form, releasing the transcription factor form that translocates into the nucleus, where it activates transcription of genes involved in the unfolded protein response (UPR) (PubMed:<a href="http://www.uniprot.org/citations/10564271" target="\_blank">10564271</a>, PubMed:<a href="http://www.uniprot.org/citations/11158310" target="\_blank">11158310</a>, PubMed:<a href="http://www.uniprot.org/citations/11779464" target="\_blank">11779464</a>).

#### Cellular Location

Endoplasmic reticulum membrane; Single-pass type II membrane protein. Golgi apparatus membrane; Single-pass type II membrane protein. Note=Translocates from the endoplasmic reticulum to the Golgi, where it is processed.

#### Tissue Location

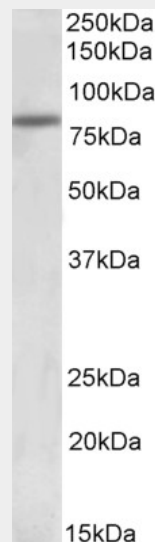
Ubiquitous..

### ATF6 (aa437-449) Antibody (internal region) - Protocols

Provided below are standard protocols that you may find useful for product applications.

- [Western Blot](#)
- [Blocking Peptides](#)
- [Dot Blot](#)
- [Immunohistochemistry](#)
- [Immunofluorescence](#)
- [Immunoprecipitation](#)
- [Flow Cytometry](#)
- [Cell Culture](#)

### ATF6 (aa437-449) Antibody (internal region) - Images



AF3978a (2 µg/ml) staining of HeLa lysate (35 µg protein in RIPA buffer). Primary incubation was 1 hour. Detected by chemiluminescence.

### ATF6 (aa437-449) Antibody (internal region) - References

Endoplasmic reticulum stress-responsive transcription factor ATF6? directs recruitment of the Mediator of RNA polymerase II transcription and multiple histone acetyltransferase complexes. Sela

D, Chen L, Martin-Brown S, Washburn MP, Florens L, Conaway JW, Conaway RC. The Journal of biological chemistry 2012 Jun 287 (27): 23035-45. PMID: 22577136