

CCDC3 (aa134-148) Antibody (internal region)
Peptide-affinity purified goat antibody
Catalog # AF3959a**Specification**

CCDC3 (aa134-148) Antibody (internal region) - Product Information

Application	WB
Primary Accession	O9BQI4
Other Accession	NP_113643.1 , 83643 , 74186 (mouse) , 498795 (rat)
Reactivity	Human
Predicted	Mouse, Rat, Pig, Dog
Host	Goat
Clonality	Polyclonal
Concentration	0.5 mg/ml
Isotype	IgG
Calculated MW	30731

CCDC3 (aa134-148) Antibody (internal region) - Additional Information

Gene ID 83643

Other Names

Coiled-coil domain-containing protein 3, Fat/vessel-derived secretory protein, Favine, CCDC3

Format

0.5 mg/ml in Tris saline, 0.02% sodium azide, pH7.3 with 0.5% bovine serum albumin

Storage

Maintain refrigerated at 2-8°C for up to 6 months. For long term storage store at -20°C in small aliquots to prevent freeze-thaw cycles.

Precautions

CCDC3 (aa134-148) Antibody (internal region) is for research use only and not for use in diagnostic or therapeutic procedures.

CCDC3 (aa134-148) Antibody (internal region) - Protein Information

Name CCDC3

Function

Negatively regulates TNF-alpha-induced pro-inflammatory response in endothelial cells (ECs) via inhibition of TNF-alpha-induced NF-kappaB activation in ECs (PubMed:25193116). Positively regulates lipid accumulation in adipose cells (By similarity).

Cellular Location

Secreted {ECO:0000250|UniProtKB:Q9D6Y1}.

Tissue Location

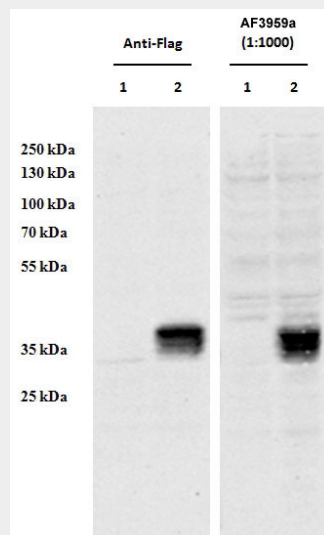
Expressed in umbilical vein endothelial cells (HUVEC), and at lower levels in aortic smooth muscle cells (HASMC)

CCDC3 (aa134-148) Antibody (internal region) - Protocols

Provided below are standard protocols that you may find useful for product applications.

- [Western Blot](#)
- [Blocking Peptides](#)
- [Dot Blot](#)
- [Immunohistochemistry](#)
- [Immunofluorescence](#)
- [Immunoprecipitation](#)
- [Flow Cytometry](#)
- [Cell Culture](#)

CCDC3 (aa134-148) Antibody (internal region) - Images



HEK293 overexpressing Human CCDC3 with C-terminal tag (DYKDDDDK) and probed with anti-DYKDDDDK in the left panel and with AF3959a (0.5ug/ml) in the right panel (empty vector transfection in first lanes). Data obtained from Dr. YangXin Fu, Dept Oncology, University of Alberta, Edmonton, Canada.

CCDC3 (aa134-148) Antibody (internal region) - References

PMID: