

MDH1 / MOR2 (aa211-223) Antibody (internal region)
Peptide-affinity purified goat antibody
Catalog # AF3952a**Specification****MDH1 / MOR2 (aa211-223) Antibody (internal region) - Product Information**

Application	WB
Primary Accession	P40925
Other Accession	NP_001186040.1 , NP_005908.1 , NP_001186041.1 , 4190 , 17449 (mouse) , 24551 (rat)
Reactivity	Human, Mouse, Rat
Host	Goat
Clonality	Polyclonal
Concentration	0.5 mg/ml
Isotype	IgG
Calculated MW	36426

MDH1 / MOR2 (aa211-223) Antibody (internal region) - Additional Information

Gene ID 4190

Other Names

Malate dehydrogenase, cytoplasmic, 1.1.1.37, Cytosolic malate dehydrogenase, Diiodophenylpyruvate reductase, 1.1.1.96, MDH1, MDHA

Format

0.5 mg/ml in Tris saline, 0.02% sodium azide, pH7.3 with 0.5% bovine serum albumin

Storage

Maintain refrigerated at 2-8°C for up to 6 months. For long term storage store at -20°C in small aliquots to prevent freeze-thaw cycles.

Precautions

MDH1 / MOR2 (aa211-223) Antibody (internal region) is for research use only and not for use in diagnostic or therapeutic procedures.

MDH1 / MOR2 (aa211-223) Antibody (internal region) - Protein Information

Name MDH1 {ECO:0000303|PubMed:34012073, ECO:0000312|HGNC:HGNC:6970}

Function

Catalyzes the reduction of aromatic alpha-keto acids in the presence of NADH (PubMed:2449162, PubMed:3052244). Plays essential roles in the malate-aspartate shuttle and the tricarboxylic acid cycle, important in mitochondrial NADH supply for oxidative phosphorylation (PubMed:3052244).

href="http://www.uniprot.org/citations/31538237" target="_blank">31538237). Catalyzes the reduction of 2-oxoglutarate to 2- hydroxyglutarate, leading to elevated reactive oxygen species (ROS) (PubMed:34012073).

Cellular Location
Cytoplasm, cytosol.

MDH1 / MOR2 (aa211-223) Antibody (internal region) - Protocols

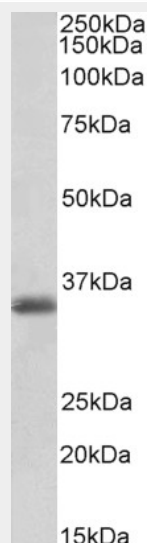
Provided below are standard protocols that you may find useful for product applications.

- [Western Blot](#)
- [Blocking Peptides](#)
- [Dot Blot](#)
- [Immunohistochemistry](#)
- [Immunofluorescence](#)
- [Immunoprecipitation](#)
- [Flow Cytometry](#)
- [Cell Culture](#)

MDH1 / MOR2 (aa211-223) Antibody (internal region) - Images



AF3952a (0.03 μ g/ml) staining of Human (A), Mouse(B) and Rat (C) Heart lysates (35 μ g protein in RIPA buffer). Primary incubation was 1 hour. Detected by chemiluminescence.



AF3952a (0.1 µg/ml) staining of Pig Heart lysates (35 µg protein in RIPA buffer). Primary incubation was 1 hour. Detected by chemiluminescence.

MDH1 / MOR2 (aa211-223) Antibody (internal region) - Background

This antibody is expected to recognize all reported isoforms (NP_001186040.1; NP_005908.1; NP_001186041.1).

MDH1 / MOR2 (aa211-223) Antibody (internal region) - References

A nucleocytoplasmic malate dehydrogenase regulates p53 transcriptional activity in response to metabolic stress. Lee SM, Kim JH, Cho EJ, Youn HD. Cell Death Differ. 2009 May;16(5):738-48. PMID: 19229245