

CAPN1 (aa468-481) Antibody (internal region)
Peptide-affinity purified goat antibody
Catalog # AF3947a

Specification

CAPN1 (aa468-481) Antibody (internal region) - Product Information

Application	WB, IHC
Primary Accession	P07384
Other Accession	NP_005177.2 , 823
Reactivity	Human
Predicted	Pig
Host	Goat
Clonality	Polyclonal
Concentration	0.5 mg/ml
Isotype	IgG
Calculated MW	81890

CAPN1 (aa468-481) Antibody (internal region) - Additional Information

Gene ID 823

Other Names

Calpain-1 catalytic subunit, 3.4.22.52, Calcium-activated neutral proteinase 1, CANP 1, Calpain mu-type, Calpain-1 large subunit, Cell proliferation-inducing gene 30 protein, Micromolar-calpain, muCANP, CAPN1, CANPL1

Format

0.5 mg/ml in Tris saline, 0.02% sodium azide, pH7.3 with 0.5% bovine serum albumin

Storage

Maintain refrigerated at 2-8°C for up to 6 months. For long term storage store at -20°C in small aliquots to prevent freeze-thaw cycles.

Precautions

CAPN1 (aa468-481) Antibody (internal region) is for research use only and not for use in diagnostic or therapeutic procedures.

CAPN1 (aa468-481) Antibody (internal region) - Protein Information

Name CAPN1 ([HGNC:1476](#))

Synonyms CANPL1

Function

Calcium-regulated non-lysosomal thiol-protease which catalyzes limited proteolysis of substrates involved in cytoskeletal remodeling and signal transduction (PubMed:19617626, PubMed:<a

[21531719](http://www.uniprot.org/citations/21531719), PubMed: [2400579](http://www.uniprot.org/citations/2400579)). Proteolytically cleaves CTBP1 at 'Asn-375', 'Gly-387' and 'His-409' (PubMed: [23707407](http://www.uniprot.org/citations/23707407)). Cleaves and activates caspase-7 (CASP7) (PubMed: [19617626](http://www.uniprot.org/citations/19617626)).

Cellular Location

Cytoplasm. Cell membrane. Note=Translocates to the plasma membrane upon Ca(2+) binding. In granular keratinocytes and in lower corneocytes, colocalizes with FLG and FLG2 (PubMed:21531719)

Tissue Location

Ubiquitous.

CAPN1 (aa468-481) Antibody (internal region) - Protocols

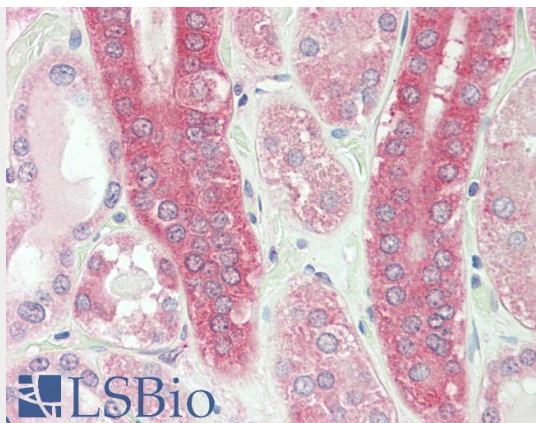
Provided below are standard protocols that you may find useful for product applications.

- [Western Blot](#)
- [Blocking Peptides](#)
- [Dot Blot](#)
- [Immunohistochemistry](#)
- [Immunofluorescence](#)
- [Immunoprecipitation](#)
- [Flow Cytometry](#)
- [Cell Culture](#)

CAPN1 (aa468-481) Antibody (internal region) - Images



AF3947a (0.3 µg/ml) staining of Human Kidney lysate (35 µg protein in RIPA buffer). Detected by chemiluminescence.



AF3947a (5 µg/ml) staining of paraffin embedded Human Kidney. Steamed antigen retrieval with citrate buffer Ph 6, AP-staining.

CAPN1 (aa468-481) Antibody (internal region) - Background

Reported variants represent identical protein: NP_001185797.1, NP_005177.2, NP_001185798.1.

CAPN1 (aa468-481) Antibody (internal region) - References

Calpain-1 cleaves Rad21 to promote sister chromatid separation. Panigrahi AK, Zhang N, Mao Q, Pati D. Mol Cell Biol. 2011 Nov;31(21):4335-47. PMID: 21876002