

IGFBP1 Antibody (C-Term)
Peptide-affinity purified goat antibody
Catalog # AF3934a

Specification

IGFBP1 Antibody (C-Term) - Product Information

Application	WB
Primary Accession	P08833
Other Accession	NP_000587.1 , 3484
Reactivity	Human
Host	Goat
Clonality	Polyclonal
Concentration	0.5 mg/ml
Isotype	IgG
Calculated MW	27904

IGFBP1 Antibody (C-Term) - Additional Information

Gene ID 3484

Other Names

Insulin-like growth factor-binding protein 1, IBP-1, IGF-binding protein 1, IGFBP-1, Placental protein 12, PP12, IGFBP1, IBP1

Format

0.5 mg/ml in Tris saline, 0.02% sodium azide, pH7.3 with 0.5% bovine serum albumin

Storage

Maintain refrigerated at 2-8°C for up to 6 months. For long term storage store at -20°C in small aliquots to prevent freeze-thaw cycles.

Precautions

IGFBP1 Antibody (C-Term) is for research use only and not for use in diagnostic or therapeutic procedures.

IGFBP1 Antibody (C-Term) - Protein Information

Name IGFBP1

Synonyms IBP1

Function

IGF-binding proteins prolong the half-life of the IGFs and have been shown to either inhibit or stimulate the growth promoting effects of the IGFs on cell culture. They alter the interaction of IGFs with their cell surface receptors. Promotes cell migration.

Cellular Location

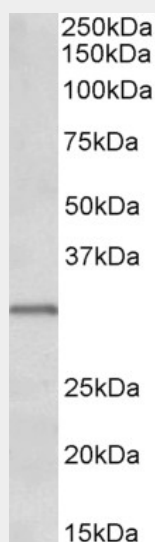
Secreted.

IGFBP1 Antibody (C-Term) - Protocols

Provided below are standard protocols that you may find useful for product applications.

- [Western Blot](#)
- [Blocking Peptides](#)
- [Dot Blot](#)
- [Immunohistochemistry](#)
- [Immunofluorescence](#)
- [Immunoprecipitation](#)
- [Flow Cytometry](#)
- [Cell Culture](#)

IGFBP1 Antibody (C-Term) - Images



AF3934a (0.1 µg/ml) staining of Human Placenta lysate (35 µg protein in RIPA buffer). Primary incubation was 1 hour. Detected by chemiluminescence.

IGFBP1 Antibody (C-Term) - References

IGFBP-1 is expressed specifically in ovarian clear cell adenocarcinoma. Sugita S, Morishita Y, Kano J, Furuya S, Shiba-Ishii A, Noguchi M. Histopathology. 2011 Apr;58(5):729-38. PMID: 21457161