

**calbindin D28 Antibody (internal region)**  
Peptide-affinity purified goat antibody  
Catalog # AF3865a**Specification**

---

**calbindin D28 Antibody (internal region) - Product Information**

|                   |   |
|-------------------|---|
| Application       | WB  |
| Primary Accession | <a href="#">P05937</a>  |
| Other Accession   | <a href="#">NP_004920.1</a> , <a href="#">793</a> , <a href="#">83839 (rat)</a> |
| Reactivity        | Human, Mouse, Rat   |
| Predicted         | Pig, Dog  |
| Host              | Goat  |
| Clonality         | Polyclonal  |
| Concentration     | 0.5 mg/ml   |
| Isotype           | IgG   |
| Calculated MW     | 30025   |

**calbindin D28 Antibody (internal region) - Additional Information****Gene ID** 793**Other Names**

Calbindin, Calbindin D28, D-28K, Vitamin D-dependent calcium-binding protein, avian-type, CALB1, CAB27

**Format**

0.5 mg/ml in Tris saline, 0.02% sodium azide, pH7.3 with 0.5% bovine serum albumin

**Storage**

Maintain refrigerated at 2-8°C for up to 6 months. For long term storage store at -20°C in small aliquots to prevent freeze-thaw cycles.

**Precautions**

calbindin D28 Antibody (internal region) is for research use only and not for use in diagnostic or therapeutic procedures.

**calbindin D28 Antibody (internal region) - Protein Information****Name** CALB1**Synonyms** CAB27**Function**

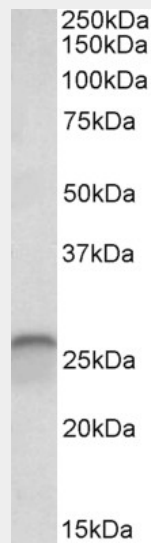
Buffers cytosolic calcium. May stimulate a membrane Ca(2+)-ATPase and a 3',5'-cyclic nucleotide phosphodiesterase.

## calbindin D28 Antibody (internal region) - Protocols

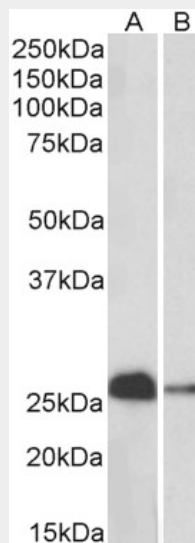
Provided below are standard protocols that you may find useful for product applications.

- [Western Blot](#)
- [Blocking Peptides](#)
- [Dot Blot](#)
- [Immunohistochemistry](#)
- [Immunofluorescence](#)
- [Immunoprecipitation](#)
- [Flow Cytometry](#)
- [Cell Culture](#)

## calbindin D28 Antibody (internal region) - Images



AF3865a (0.03  $\mu\text{g/ml}$ ) staining of Human Cerebellum lysate (35  $\mu\text{g}$  protein in RIPA buffer). Primary incubation was 1 hour. Detected by chemiluminescence.



AF3865a (0.1  $\mu\text{g/ml}$ ) staining of Mouse (A) and Rat (B) Brain lysates (35  $\mu\text{g}$  protein in RIPA buffer). Primary incubation was 1 hour. Detected by chemiluminescence.

## calbindin D28 Antibody (internal region) - Background

Immunizing peptide overlaps EF hand 2, but not any calcium binding site.

**calbindin D28 Antibody (internal region) - References**

DNA microarray analysis in a mouse model for endometriosis and validation of candidate factors with human adenomyosis. Kusakabe KT, Abe H, Kondo T, Kato K, Okada T, Otsuki Y. J Reprod Immunol. 2010 Jun;85(2):149-60. PMID: 20452033