

**VEGFA (aa288-299) Antibody (internal region)**  
Peptide-affinity purified goat antibody  
Catalog # AF3858a

**Specification**

---

**VEGFA (aa288-299) Antibody (internal region) - Product Information**

Application	<b>WB</b>
Primary Accession	<a href="#">P15692</a>
Other Accession	<a href="#">NP_001020537.2</a> , <a href="#">NP_003367.4</a> , <a href="#">NP_001020538.2</a> , <a href="#">NP_001020539.2</a> , etc., <a href="#">7422</a>
Reactivity	<b>Human</b>
Predicted	<b>Pig, Dog</b>
Host	<b>Goat</b>
Clonality	<b>Polyclonal</b>
Concentration	<b>0.5 mg/ml</b>
Isotype	<b>IgG</b>
Calculated MW	<b>43597</b>

**VEGFA (aa288-299) Antibody (internal region) - Additional Information**

**Gene ID** 7422

**Other Names**

Vascular endothelial growth factor A, VEGF-A, Vascular permeability factor, VPF, VEGFA, VEGF

**Format**

0.5 mg/ml in Tris saline, 0.02% sodium azide, pH7.3 with 0.5% bovine serum albumin

**Storage**

Maintain refrigerated at 2-8°C for up to 6 months. For long term storage store at -20°C in small aliquots to prevent freeze-thaw cycles.

**Precautions**

VEGFA (aa288-299) Antibody (internal region) is for research use only and not for use in diagnostic or therapeutic procedures.

**VEGFA (aa288-299) Antibody (internal region) - Protein Information**

**Name** VEGFA

**Synonyms** VEGF

**Function**

[N-VEGF]: Participates in the induction of key genes involved in the response to hypoxia and in the induction of angiogenesis such as HIF1A (PubMed:<a href="http://www.uniprot.org/citations/35455969" target="\_blank">35455969</a>). Involved in protecting cells from hypoxia- mediated cell death (By similarity).

### Cellular Location

[N-VEGF]: Cytoplasm. Nucleus. Note=Cytoplasmic in normoxic conditions and localizes to the nucleus under hypoxic conditions [Isoform L-VEGF189]: Endoplasmic reticulum. Golgi apparatus. Secreted, extracellular space, extracellular matrix [Isoform VEGF165]: Secreted

### Tissue Location

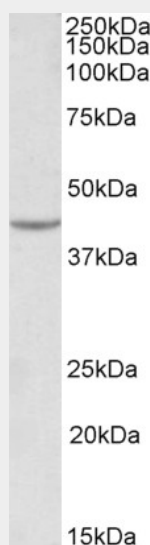
Higher expression in pituitary tumors than the pituitary gland. [Isoform VEGF165]: Widely expressed. [Isoform VEGF206]: Not widely expressed.

## VEGFA (aa288-299) Antibody (internal region) - Protocols

Provided below are standard protocols that you may find useful for product applications.

- [Western Blot](#)
- [Blocking Peptides](#)
- [Dot Blot](#)
- [Immunohistochemistry](#)
- [Immunofluorescence](#)
- [Immunoprecipitation](#)
- [Flow Cytometry](#)
- [Cell Culture](#)

## VEGFA (aa288-299) Antibody (internal region) - Images



AF3858a (0.1 µg/ml) staining of HEK293 lysate (35 µg protein in RIPA buffer). Primary incubation was 1 hour. Detected by chemiluminescence.

## VEGFA (aa288-299) Antibody (internal region) - Background

This antibody is expected to recognize all reported isoforms.

## VEGFA (aa288-299) Antibody (internal region) - References

Oncostatin M and IL-6 induce u-PA and VEGF in prostate cancer cells and correlate in vivo. Weiss TW, Simak R, Kaun C, Rega G, Pflüger H, Maurer G, Huber K, Wojta J. Anticancer Res. 2011 Oct;31(10):3273-8. PMID: 21965736