

cytokeratin 20 (aa48-60) Antibody (internal region)
Peptide-affinity purified goat antibody
Catalog # AF3857a

Specification

cytokeratin 20 (aa48-60) Antibody (internal region) - Product Information

Application	WB, IHC
Primary Accession	P35900
Other Accession	NP_061883.1 , 54474
Reactivity	Human
Host	Goat
Clonality	Polyclonal
Concentration	0.5 mg/ml
Isotype	IgG
Calculated MW	48487

cytokeratin 20 (aa48-60) Antibody (internal region) - Additional Information

Gene ID 54474

Other Names

Keratin, type I cytoskeletal 20, Cytokeratin-20, CK-20, Keratin-20, K20, Protein IT, KRT20

Format

0.5 mg/ml in Tris saline, 0.02% sodium azide, pH7.3 with 0.5% bovine serum albumin

Storage

Maintain refrigerated at 2-8°C for up to 6 months. For long term storage store at -20°C in small aliquots to prevent freeze-thaw cycles.

Precautions

cytokeratin 20 (aa48-60) Antibody (internal region) is for research use only and not for use in diagnostic or therapeutic procedures.

cytokeratin 20 (aa48-60) Antibody (internal region) - Protein Information

Name KRT20

Function

Plays a significant role in maintaining keratin filament organization in intestinal epithelia. When phosphorylated, plays a role in the secretion of mucin in the small intestine (By similarity).

Cellular Location

Cytoplasm

Tissue Location

Expressed predominantly in the intestinal epithelium. Expressed in luminal cells of colonic mucosa.

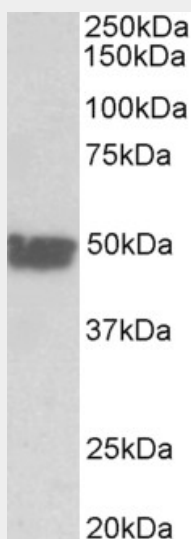
Also expressed in the Merkel cells of keratinized oral mucosa; specifically at the tips of some rete ridges of the gingival mucosa, in the basal layer of the palatal mucosa and in the taste buds of lingual mucosa

cytokeratin 20 (aa48-60) Antibody (internal region) - Protocols

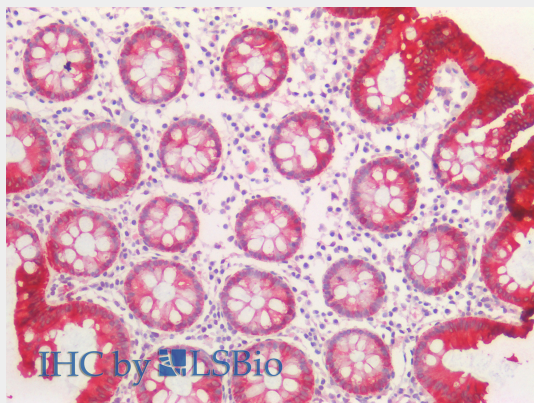
Provided below are standard protocols that you may find useful for product applications.

- [Western Blot](#)
- [Blocking Peptides](#)
- [Dot Blot](#)
- [Immunohistochemistry](#)
- [Immunofluorescence](#)
- [Immunoprecipitation](#)
- [Flow Cytometry](#)
- [Cell Culture](#)

cytokeratin 20 (aa48-60) Antibody (internal region) - Images



AF3857a (0.03 μ g/ml) staining of Human Colon lysate (35 μ g protein in RIPA buffer). Primary incubation was 1 hour. Detected by chemiluminescence.



AF3857a (5 μ g/ml) staining of paraffin embedded Human Colon. Steamed antigen retrieval with citrate buffer pH 6, AP-staining.

cytokeratin 20 (aa48-60) Antibody (internal region) - References

SATB2 in combination with cytokeratin 20 identifies over 95% of all colorectal carcinomas.
Magnusson K, de Wit M, Brennan DJ, Johnson LB, McGee SF, Lundberg E, Naicker K, Klinger R, Kampf C, Asplund A, Wester K, Gry M, Bjartell A, Gallagher WM, Rexhepaj E, Kilpinen S, Kallioniemi OP, Belt E, Goos J, Meijer G, Birgisson H, Glimelius B, Borrebaec Am J Surg Pathol. 2011 Jul;35(7):937-48.
PMID: 21677534