

**cytokeratin 20 Antibody (internal region)**  
Peptide-affinity purified goat antibody  
Catalog # AF3856a

## Specification

---

### cytokeratin 20 Antibody (internal region) - Product Information

Application	WB, IHC
Primary Accession	<a href="#">P35900</a>
Other Accession	<a href="#">NP_061883.1</a> , <a href="#">54474</a>
Reactivity	Human
Host	Goat
Clonality	Polyclonal
Concentration	0.5 mg/ml
Isotype	IgG
Calculated MW	48487

### cytokeratin 20 Antibody (internal region) - Additional Information

**Gene ID** 54474

#### Other Names

Keratin, type I cytoskeletal 20, Cytokeratin-20, CK-20, Keratin-20, K20, Protein IT, KRT20

#### Format

0.5 mg/ml in Tris saline, 0.02% sodium azide, pH7.3 with 0.5% bovine serum albumin

#### Storage

Maintain refrigerated at 2-8°C for up to 6 months. For long term storage store at -20°C in small aliquots to prevent freeze-thaw cycles.

#### Precautions

cytokeratin 20 Antibody (internal region) is for research use only and not for use in diagnostic or therapeutic procedures.

### cytokeratin 20 Antibody (internal region) - Protein Information

**Name** KRT20

#### Function

Plays a significant role in maintaining keratin filament organization in intestinal epithelia. When phosphorylated, plays a role in the secretion of mucin in the small intestine (By similarity).

#### Cellular Location

Cytoplasm

#### Tissue Location

Expressed predominantly in the intestinal epithelium. Expressed in luminal cells of colonic mucosa.

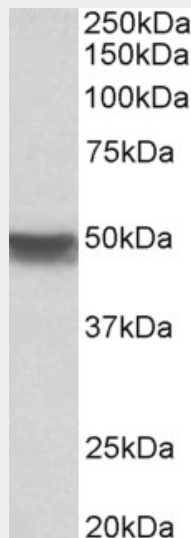
Also expressed in the Merkel cells of keratinized oral mucosa; specifically at the tips of some rete ridges of the gingival mucosa, in the basal layer of the palatal mucosa and in the taste buds of lingual mucosa

### **cytokeratin 20 Antibody (internal region) - Protocols**

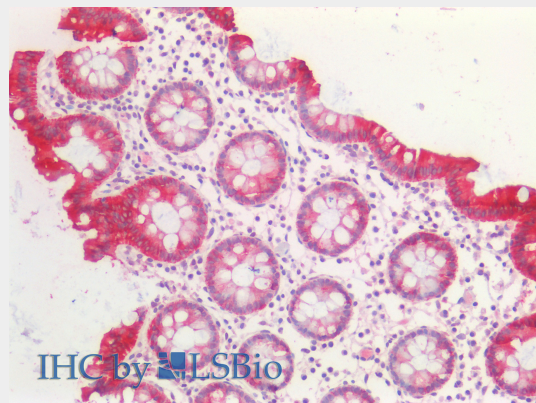
Provided below are standard protocols that you may find useful for product applications.

- [Western Blot](#)
- [Blocking Peptides](#)
- [Dot Blot](#)
- [Immunohistochemistry](#)
- [Immunofluorescence](#)
- [Immunoprecipitation](#)
- [Flow Cytometry](#)
- [Cell Culture](#)

### **cytokeratin 20 Antibody (internal region) - Images**



AF3856a (0.03 $\mu$ g/ml) staining of Human Colon lysate (35 $\mu$ g protein in RIPA buffer). Detected by chemiluminescence.



AF3856a (5 $\mu$ g/ml) staining of paraffin embedded Human Colon. Steamed antigen retrieval with citrate buffer pH 6, AP-staining.

**cytokeratin 20 Antibody (internal region) - References**

SATB2 in combination with cytokeratin 20 identifies over 95% of all colorectal carcinomas.

Magnusson K, de Wit M, Brennan DJ, Johnson LB, McGee SF, Lundberg E, Naicker K, Klinger R, Kampf C, Asplund A, Wester K, Gry M, Bjartell A, Gallagher WM, Rexhepaj E, Kilpinen S, Kallioniemi OP, Belt E, Goos J, Meijer G, Birgisson H, Glimelius B, Borrebaec Am J Surg Pathol. 2011 Jul;35(7):937-48.

PMID: 21677534