

**endophilin-A1 / SH3GL2 Antibody (internal region)**  
Peptide-affinity purified goat antibody  
Catalog # AF3838a

**Specification**

---

**endophilin-A1 / SH3GL2 Antibody (internal region) - Product Information**

|                   |                                                    |
|-------------------|----------------------------------------------------|
| Application       | WB, IHC                                            |
| Primary Accession | <a href="#">Q99962</a>                             |
| Other Accession   | <a href="#">NP_003017.1</a> , <a href="#">6456</a> |
| Reactivity        | Human                                              |
| Predicted         | Pig                                                |
| Host              | Goat                                               |
| Clonality         | Polyclonal                                         |
| Concentration     | 0.5 mg/ml                                          |
| Isotype           | IgG                                                |
| Calculated MW     | 39962                                              |

**endophilin-A1 / SH3GL2 Antibody (internal region) - Additional Information**

**Gene ID** 6456

**Other Names**

Endophilin-A1, EEN-B1, Endophilin-1, SH3 domain protein 2A, SH3 domain-containing GRB2-like protein 2, SH3GL2, CNSA2, SH3D2A

**Format**

0.5 mg/ml in Tris saline, 0.02% sodium azide, pH7.3 with 0.5% bovine serum albumin

**Storage**

Maintain refrigerated at 2-8°C for up to 6 months. For long term storage store at -20°C in small aliquots to prevent freeze-thaw cycles.

**Precautions**

endophilin-A1 / SH3GL2 Antibody (internal region) is for research use only and not for use in diagnostic or therapeutic procedures.

**endophilin-A1 / SH3GL2 Antibody (internal region) - Protein Information**

**Name** SH3GL2

**Synonyms** CNSA2, SH3D2A

**Function**

Implicated in synaptic vesicle endocytosis. May recruit other proteins to membranes with high curvature. Required for BDNF-dependent dendrite outgrowth. Cooperates with SH3GL2 to mediate BDNF-NTRK2 early endocytic trafficking and signaling from early endosomes.

**Cellular Location**

Cytoplasm {ECO:0000250|UniProtKB:O35179}. Membrane {ECO:0000250|UniProtKB:O35179};  
Peripheral membrane protein {ECO:0000250|UniProtKB:O35179}. Early endosome  
{ECO:0000250|UniProtKB:Q62420}. Presynapse {ECO:0000250|UniProtKB:O35179}

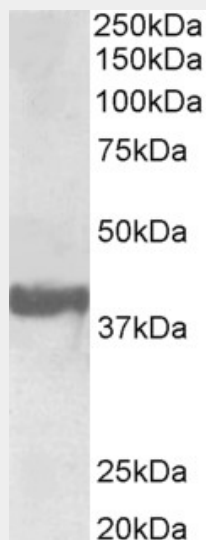
**Tissue Location**

Brain, mostly in frontal cortex. Expressed at high level in fetal cerebellum

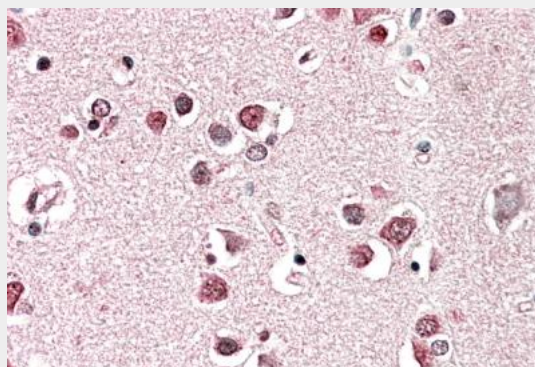
**endophilin-A1 / SH3GL2 Antibody (internal region) - Protocols**

Provided below are standard protocols that you may find useful for product applications.

- [Western Blot](#)
- [Blocking Peptides](#)
- [Dot Blot](#)
- [Immunohistochemistry](#)
- [Immunofluorescence](#)
- [Immunoprecipitation](#)
- [Flow Cytometry](#)
- [Cell Culture](#)

**endophilin-A1 / SH3GL2 Antibody (internal region) - Images**

AF3838a (0.3  $\mu$ g/ml) staining of Human Frontal Cortex lysate (35  $\mu$ g protein in RIPA buffer). Primary incubation was 1 hour. Detected by chemiluminescence.



AF3838a (5 µg/ml) staining of paraffin embedded Human Cerebral Cortex. Steamed antigen retrieval with citrate buffer pH 6, AP-staining.

**endophilin-A1 / SH3GL2 Antibody (internal region) - References**

SH3GL2 gene participates in MEK-ERK signal pathway partly by regulating EGFR in the laryngeal carcinoma cell line Hep2. Shang C, Guo Y, Fu S, Fu W, Sun K. Med Sci Monit. 2010 Jun;16(6):BR168-73. PMID: 20512084