

**NDUFA7 Antibody (internal region)**  
Peptide-affinity purified goat antibody  
Catalog # AF3834a

**Specification**

---

**NDUFA7 Antibody (internal region) - Product Information**

Application	IHC, WB
Primary Accession	<a href="#">O95182</a>
Other Accession	<a href="#">NP_004992.2</a> , <a href="#">4701</a> , <a href="#">66416 (mouse)</a> , <a href="#">299643 (rat)</a>
Reactivity	Human, Mouse, Rat, Pig
Host	Goat
Clonality	Polyclonal
Concentration	0.5 mg/ml
Isotype	IgG
Calculated MW	12551

**NDUFA7 Antibody (internal region) - Additional Information**

Gene ID 4701

**Other Names**

NADH dehydrogenase [ubiquinone] 1 alpha subcomplex subunit 7, Complex I-B14.5a, CI-B14.5a, NADH-ubiquinone oxidoreductase subunit B14.5a, NDUFA7

**Format**

0.5 mg/ml in Tris saline, 0.02% sodium azide, pH7.3 with 0.5% bovine serum albumin

**Storage**

Maintain refrigerated at 2-8°C for up to 6 months. For long term storage store at -20°C in small aliquots to prevent freeze-thaw cycles.

**Precautions**

NDUFA7 Antibody (internal region) is for research use only and not for use in diagnostic or therapeutic procedures.

**NDUFA7 Antibody (internal region) - Protein Information**

Name NDUFA7

**Function**

Accessory subunit of the mitochondrial membrane respiratory chain NADH dehydrogenase (Complex I), that is believed not to be involved in catalysis. Complex I functions in the transfer of electrons from NADH to the respiratory chain. The immediate electron acceptor for the enzyme is believed to be ubiquinone.

**Cellular Location**

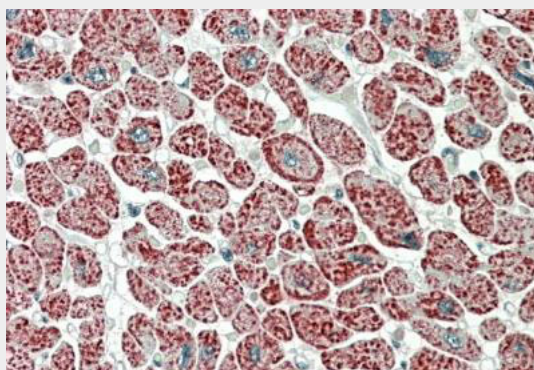
Mitochondrion inner membrane; Peripheral membrane protein; Matrix side

### NDUFA7 Antibody (internal region) - Protocols

Provided below are standard protocols that you may find useful for product applications.

- [Western Blot](#)
- [Blocking Peptides](#)
- [Dot Blot](#)
- [Immunohistochemistry](#)
- [Immunofluorescence](#)
- [Immunoprecipitation](#)
- [Flow Cytometry](#)
- [Cell Culture](#)

### NDUFA7 Antibody (internal region) - Images



AF3834a (5 µg/ml) staining of paraffin embedded Human Heart. Steamed antigen retrieval with citrate buffer pH 6, AP-staining.



AF3834a (0.1 µg/ml) staining of Human Heart lysate (35 µg protein in RIPA buffer). Primary incubation was 1 hour. Detected by chemiluminescence.

### NDUFA7 Antibody (internal region) - References

Genetic variants in nuclear-encoded mitochondrial genes influence AIDS progression. Hendrickson

SL, Lautenberger JA, Chinn LW, Malasky M, Sezgin E, Kingsley LA, Goedert JJ, Kirk GD, Gomperts ED, Buchbinder SP, Troyer JL, O'Brien SJ. PLoS One. 2010 Sep 21;5(9):e12862. PMID: 20877624