

CHRM2 (aa352-364) Antibody (internal region)
Peptide-affinity purified goat antibody
Catalog # AF3812a

Specification

CHRM2 (aa352-364) Antibody (internal region) - Product Information

Application	WB
Primary Accession	P08172
Other Accession	NP_000730.1 , 1129 , 243764 (mouse)
Reactivity	Mouse
Predicted	Human, Pig, Dog
Host	Goat
Clonality	Polyclonal
Concentration	0.5 mg/ml
Isotype	IgG
Calculated MW	51715

CHRM2 (aa352-364) Antibody (internal region) - Additional Information

Gene ID 1129

Other Names

Muscarinic acetylcholine receptor M2, CHRM2

Format

0.5 mg/ml in Tris saline, 0.02% sodium azide, pH7.3 with 0.5% bovine serum albumin

Storage

Maintain refrigerated at 2-8°C for up to 6 months. For long term storage store at -20°C in small aliquots to prevent freeze-thaw cycles.

Precautions

CHRM2 (aa352-364) Antibody (internal region) is for research use only and not for use in diagnostic or therapeutic procedures.

CHRM2 (aa352-364) Antibody (internal region) - Protein Information

Name CHRM2

Function

The muscarinic acetylcholine receptor mediates various cellular responses, including inhibition of adenylate cyclase, breakdown of phosphoinositides and modulation of potassium channels through the action of G proteins. Primary transducing effect is adenylate cyclase inhibition. Signaling promotes phospholipase C activity, leading to the release of inositol trisphosphate (IP3); this then triggers calcium ion release into the cytosol.

Cellular Location

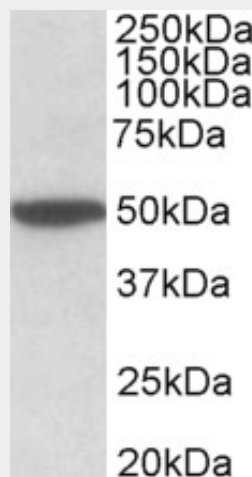
Cell membrane; Multi-pass membrane protein. Postsynaptic cell membrane; Multi-pass membrane protein. Note=Phosphorylation in response to agonist binding promotes receptor internalization {ECO:0000250|UniProtKB:P06199}

CHRM2 (aa352-364) Antibody (internal region) - Protocols

Provided below are standard protocols that you may find useful for product applications.

- [Western Blot](#)
- [Blocking Peptides](#)
- [Dot Blot](#)
- [Immunohistochemistry](#)
- [Immunofluorescence](#)
- [Immunoprecipitation](#)
- [Flow Cytometry](#)
- [Cell Culture](#)

CHRM2 (aa352-364) Antibody (internal region) - Images



AF3812a (2 µg/ml) staining of Mouse Brain lysate (35 µg protein in RIPA buffer). Primary incubation was 1 hour. Detected by chemiluminescence.

CHRM2 (aa352-364) Antibody (internal region) - Background

Reported variants represent identical protein: NP_001006628.1, NP_001006633.1, NP_001006627.1, NP_000730.1, NP_001006629.1, NP_001006630.1, NP_001006631.1, NP_001006632.1.

CHRM2 (aa352-364) Antibody (internal region) - References

Preliminary evidence for associations of CHRM2 with substance use and disinhibition in adolescence. Hendershot CS, Bryan AD, Ewing SW, Claus ED, Hutchison KE. J Abnorm Child Psychol. 2011 Jul;39(5):671-81. PMID: 21494862