

ARF4 (aa137-150) Antibody (internal region)
Peptide-affinity purified goat antibody
Catalog # AF3806a

Specification

ARF4 (aa137-150) Antibody (internal region) - Product Information

Application	WB
Primary Accession	P18085
Other Accession	NP_001651.1 , 378 , 11843 (mouse) , 79120 (rat)
Reactivity	Human, Mouse
Predicted	Rat, Pig
Host	Goat
Clonality	Polyclonal
Concentration	0.5 mg/ml
Isotype	IgG
Calculated MW	20511

ARF4 (aa137-150) Antibody (internal region) - Additional Information

Gene ID 378

Other Names

ADP-ribosylation factor 4, ARF4, ARF2

Format

0.5 mg/ml in Tris saline, 0.02% sodium azide, pH7.3 with 0.5% bovine serum albumin

Storage

Maintain refrigerated at 2-8°C for up to 6 months. For long term storage store at -20°C in small aliquots to prevent freeze-thaw cycles.

Precautions

ARF4 (aa137-150) Antibody (internal region) is for research use only and not for use in diagnostic or therapeutic procedures.

ARF4 (aa137-150) Antibody (internal region) - Protein Information

Name ARF4

Synonyms ARF2

Function

GTP-binding protein that functions as an allosteric activator of the cholera toxin catalytic subunit, an ADP-ribosyltransferase. Involved in protein trafficking; may modulate vesicle budding and uncoating within the Golgi apparatus. Part of the ciliary targeting complex containing Rab11, ASAP1, Rabin8/RAB31P, RAB11FIP3 and ARF4, which direct preciliary vesicle trafficking to mother centriole and ciliogenesis initiation (PubMed:

target="_blank">25673879).

Cellular Location

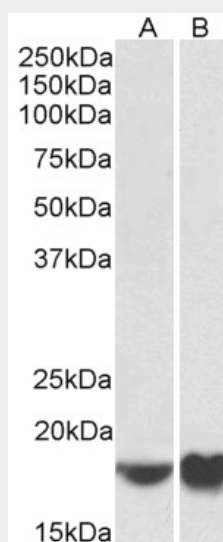
Golgi apparatus. Membrane; Lipid-anchor

ARF4 (aa137-150) Antibody (internal region) - Protocols

Provided below are standard protocols that you may find useful for product applications.

- [Western Blot](#)
- [Blocking Peptides](#)
- [Dot Blot](#)
- [Immunohistochemistry](#)
- [Immunofluorescence](#)
- [Immunoprecipitation](#)
- [Flow Cytometry](#)
- [Cell Culture](#)

ARF4 (aa137-150) Antibody (internal region) - Images



AF3806a (0.5 $\mu\text{g/ml}$) staining of NIH3T3 (A) and HeLa (B) lysates (35 μg protein in RIPA buffer). Primary incubation was 1 hour. Detected by chemiluminescence.

ARF4 (aa137-150) Antibody (internal region) - References

Regulation of ADP-ribosylation factor 4 expression by small leucine zipper protein and involvement in breast cancer cell migration. Jang SY, Jang SW, Ko J. Cancer Lett. 2012 Jan 28;314(2):185-97. PMID: 22004728