

Synaptotagmin-5 (aa 80-93) Antibody (internal region)
Peptide-affinity purified goat antibody
Catalog # AF3804a

Specification

Synaptotagmin-5 (aa 80-93) Antibody (internal region) - Product Information

Application	WB
Primary Accession	O00445
Other Accession	NP_058604.1 , 6861 , 53420 (mouse) , 54309 (rat)
Reactivity	Human
Predicted	Mouse, Pig, Dog
Host	Goat
Clonality	Polyclonal
Concentration	0.5 mg/ml
Isotype	IgG
Calculated MW	42900

Synaptotagmin-5 (aa 80-93) Antibody (internal region) - Additional Information

Gene ID 6861

Other Names

Synaptotagmin-5, Synaptotagmin V, SytV, SYT5

Format

0.5 mg/ml in Tris saline, 0.02% sodium azide, pH7.3 with 0.5% bovine serum albumin

Storage

Maintain refrigerated at 2-8°C for up to 6 months. For long term storage store at -20°C in small aliquots to prevent freeze-thaw cycles.

Precautions

Synaptotagmin-5 (aa 80-93) Antibody (internal region) is for research use only and not for use in diagnostic or therapeutic procedures.

Synaptotagmin-5 (aa 80-93) Antibody (internal region) - Protein Information

Name SYT5

Function

May be involved in Ca(2+)-dependent exocytosis of secretory vesicles through Ca(2+) and phospholipid binding to the C2 domain or may serve as Ca(2+) sensors in the process of vesicular trafficking and exocytosis. Regulates the Ca(2+)-dependent secretion of norepinephrine in PC12 cells. Required for export from the endocytic recycling compartment to the cell surface (By similarity).

Cellular Location

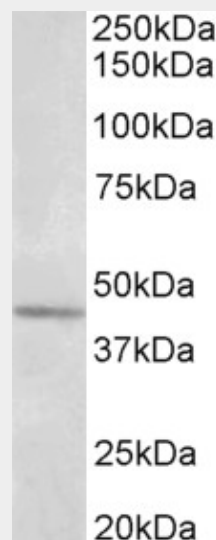
Cytoplasmic vesicle, secretory vesicle, synaptic vesicle membrane; Single-pass membrane protein. Recycling endosome membrane; Single-pass membrane protein. Note=In mast cells, localizes to the endocytic recycling compartment.

Synaptotagmin-5 (aa 80-93) Antibody (internal region) - Protocols

Provided below are standard protocols that you may find useful for product applications.

- [Western Blot](#)
- [Blocking Peptides](#)
- [Dot Blot](#)
- [Immunohistochemistry](#)
- [Immunofluorescence](#)
- [Immunoprecipitation](#)
- [Flow Cytometry](#)
- [Cell Culture](#)

Synaptotagmin-5 (aa 80-93) Antibody (internal region) - Images



AF3804a (1 µg/ml) staining of Olfactory bulb lysate (35 µg protein in RIPA buffer). Primary incubation was 1 hour. Detected by chemiluminescence.

Synaptotagmin-5 (aa 80-93) Antibody (internal region) - References

Identification of a nonneuronal isoform of synaptotagmin. Hudson AW, Birnbaum MJ. Proc Natl Acad Sci U S A. 1995 Jun 20;92(13):5895-9. PMID: 7597049