

Estrogen receptor beta (aa417-428) Antibody (internal region)
Peptide-affinity purified goat antibody
Catalog # AF3788a

Specification

Estrogen receptor beta (aa417-428) Antibody (internal region) - Product Information

Application	WB
Primary Accession	O92731
Other Accession	NP_001428.1 , NP_001035365.1 , NP_001201831.1 , NP_001201832.1 , 2100
Reactivity	Human
Host	Goat
Clonality	Polyclonal
Concentration	0.5 mg/ml
Isotype	IgG
Calculated MW	59216

Estrogen receptor beta (aa417-428) Antibody (internal region) - Additional Information

Gene ID 2100

Other Names

Estrogen receptor beta, ER-beta, Nuclear receptor subfamily 3 group A member 2, ESR2, ESTRB, NR3A2

Format

0.5 mg/ml in Tris saline, 0.02% sodium azide, pH7.3 with 0.5% bovine serum albumin

Storage

Maintain refrigerated at 2-8°C for up to 6 months. For long term storage store at -20°C in small aliquots to prevent freeze-thaw cycles.

Precautions

Estrogen receptor beta (aa417-428) Antibody (internal region) is for research use only and not for use in diagnostic or therapeutic procedures.

Estrogen receptor beta (aa417-428) Antibody (internal region) - Protein Information

Name ESR2

Synonyms ESTRB, NR3A2

Function

Nuclear hormone receptor. Binds estrogens with an affinity similar to that of ESR1/ER-alpha, and activates expression of reporter genes containing estrogen response elements (ERE) in an estrogen- dependent manner (PubMed: <http://www.uniprot.org/citations/20074560> target="_blank">20074560).

Cellular Location

Nucleus {ECO:0000255|PROSITE-ProRule:PRU00407, ECO:0000269|PubMed:19126643, ECO:0000269|PubMed:20074560}

Tissue Location

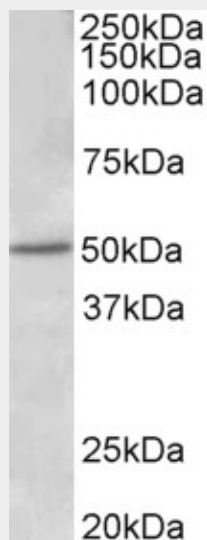
[Isoform 1]: Expressed in testis and ovary, and at a lower level in heart, brain, placenta, liver, skeletal muscle, spleen, thymus, prostate, colon, bone marrow, mammary gland and uterus. Also found in uterine bone, breast, and ovarian tumor cell lines, but not in colon and liver tumors. [Isoform 4]: Expressed in the testis. [Isoform 6]: Expressed in testis, placenta, skeletal muscle, spleen and leukocytes, and at a lower level in heart, lung, liver, kidney, pancreas, thymus, prostate, colon, small intestine, bone marrow, mammary gland and uterus. Not expressed in brain.

Estrogen receptor beta (aa417-428) Antibody (internal region) - Protocols

Provided below are standard protocols that you may find useful for product applications.

- [Western Blot](#)
- [Blocking Peptides](#)
- [Dot Blot](#)
- [Immunohistochemistry](#)
- [Immunofluorescence](#)
- [Immunoprecipitation](#)
- [Flow Cytometry](#)
- [Cell Culture](#)

Estrogen receptor beta (aa417-428) Antibody (internal region) - Images



AF3788a (1 µg/ml) staining of Human Placenta lysate (35 µg protein in RIPA buffer). Primary incubation was 1 hour. Detected by chemiluminescence.

Estrogen receptor beta (aa417-428) Antibody (internal region) - Background

This antibody is expected to recognize all reported isoforms (NP_001428.1; NP_001035365.1; NP_001201831.1; NP_001201832.1). Reported variants represent identical protein: NP_001035365.1, NP_001035366.1

Estrogen receptor beta (aa417-428) Antibody (internal region) - References

Estrogen receptor α exerts tumor repressive functions in human malignant pleural mesothelioma via EGFR inactivation and affects response to gefitinib. Pinton G, Thomas W, Bellini P, Manente AG, Favoni RE, Harvey BJ, Mutti L, Moro L. PLoS One. 2010 Nov 29;5(11):e14110. PMID: 21124760