

Gelsolin (isoform a) Antibody (N-Term)
Peptide-affinity purified goat antibody
Catalog # AF3742a

Specification

Gelsolin (isoform a) Antibody (N-Term) - Product Information

Application	WB
Primary Accession	P06396
Other Accession	NP_000168.1 , NP_937895.1 , NP_001121138.1 , 2934
Reactivity	Human
Host	Goat
Clonality	Polyclonal
Concentration	0.5 mg/ml
Isotype	IgG
Calculated MW	85698

Gelsolin (isoform a) Antibody (N-Term) - Additional Information

Gene ID 2934

Other Names

Gelsolin, AGEL, Actin-depolymerizing factor, ADF, Brevin, GSN

Format

0.5 mg/ml in Tris saline, 0.02% sodium azide, pH7.3 with 0.5% bovine serum albumin

Storage

Maintain refrigerated at 2-8°C for up to 6 months. For long term storage store at -20°C in small aliquots to prevent freeze-thaw cycles.

Precautions

Gelsolin (isoform a) Antibody (N-Term) is for research use only and not for use in diagnostic or therapeutic procedures.

Gelsolin (isoform a) Antibody (N-Term) - Protein Information

Name GSN

Function

Calcium-regulated, actin-modulating protein that binds to the plus (or barbed) ends of actin monomers or filaments, preventing monomer exchange (end-blocking or capping). It can promote the assembly of monomers into filaments (nucleation) as well as sever filaments already formed (PubMed: [19666512](http://www.uniprot.org/citations/19666512)). Plays a role in ciliogenesis (PubMed: [20393563](http://www.uniprot.org/citations/20393563)).

Cellular Location

[Isoform 2]: Cytoplasm, cytoskeleton.

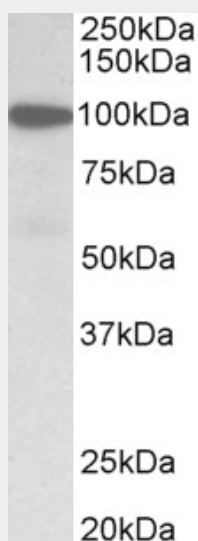
Tissue Location

Phagocytic cells, platelets, fibroblasts, nonmuscle cells, smooth and skeletal muscle cells

Gelsolin (isoform a) Antibody (N-Term) - Protocols

Provided below are standard protocols that you may find useful for product applications.

- [Western Blot](#)
- [Blocking Peptides](#)
- [Dot Blot](#)
- [Immunohistochemistry](#)
- [Immunofluorescence](#)
- [Immunoprecipitation](#)
- [Flow Cytometry](#)
- [Cell Culture](#)

Gelsolin (isoform a) Antibody (N-Term) - Images

AF3742a (1 µg/ml) staining of Human Duodenum lysate (35 µg protein in RIPA buffer). Primary incubation was 1 hour. Detected by chemiluminescence.

Gelsolin (isoform a) Antibody (N-Term) - Background

This antibody is expected to recognize isoform a (NP_000168.1) only . Reported variants represent identical protein: NP_001121138.1, NP_001121139.1 Reported variants represent identical protein: NP_001121135.1, NP_937895.1, NP_001121134.1, NP_001121137.1,

Gelsolin (isoform a) Antibody (N-Term) - References

Gelsolin negatively regulates the activity of tumor suppressor p53 through their physical interaction in hepatocarcinoma HepG2 cells. An JH, Kim JW, Jang SM, Kim CH, Kang EJ, Choi KH. Biochem Biophys Res Commun. 2011 Aug 19;412(1):44-9. PMID: 21801713