

STAT5A Antibody (C-Term)
Peptide-affinity purified goat antibody
Catalog # AF3718a

Specification

STAT5A Antibody (C-Term) - Product Information

| | |
|-------------------|--|
| Application | WB, IHC |
| Primary Accession | P42229 |
| Other Accession | NP_003143.2 , 6776 , 20850 (mouse) , 24918 (rat) |
| Reactivity | Human |
| Predicted | Mouse, Rat |
| Host | Goat |
| Clonality | Polyclonal |
| Concentration | 0.5 mg/ml |
| Isotype | IgG |
| Calculated MW | 90647 |

STAT5A Antibody (C-Term) - Additional Information

Gene ID 6776

Other Names

Signal transducer and activator of transcription 5A, STAT5A, STAT5

Format

0.5 mg/ml in Tris saline, 0.02% sodium azide, pH7.3 with 0.5% bovine serum albumin

Storage

Maintain refrigerated at 2-8°C for up to 6 months. For long term storage store at -20°C in small aliquots to prevent freeze-thaw cycles.

Precautions

STAT5A Antibody (C-Term) is for research use only and not for use in diagnostic or therapeutic procedures.

STAT5A Antibody (C-Term) - Protein Information

Name STAT5A

Synonyms STAT5

Function

Carries out a dual function: signal transduction and activation of transcription. Mediates cellular responses to the cytokine KITLG/SCF and other growth factors. Mediates cellular responses to ERBB4. May mediate cellular responses to activated FGFR1, FGFR2, FGFR3 and FGFR4. Binds to the GAS element and activates PRL- induced transcription. Regulates the expression of milk

proteins during lactation.

Cellular Location

Cytoplasm. Nucleus. Note=Translocated into the nucleus in response to phosphorylation

STAT5A Antibody (C-Term) - Protocols

Provided below are standard protocols that you may find useful for product applications.

- [Western Blot](#)
- [Blocking Peptides](#)
- [Dot Blot](#)
- [Immunohistochemistry](#)
- [Immunofluorescence](#)
- [Immunoprecipitation](#)
- [Flow Cytometry](#)
- [Cell Culture](#)

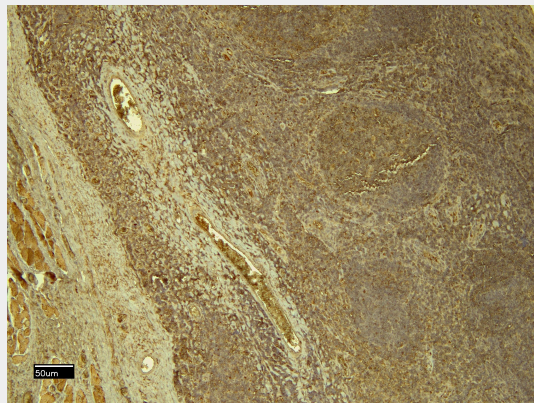
STAT5A Antibody (C-Term) - Images



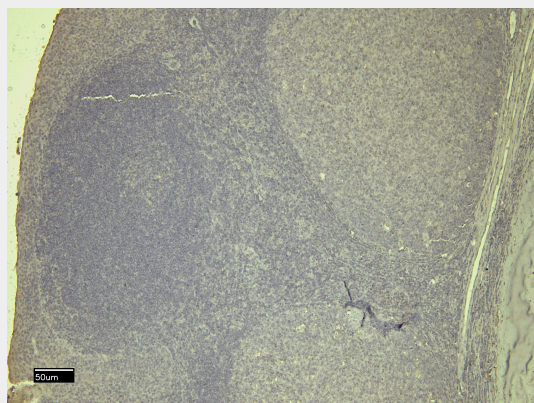
AF3718a (0.3 μ g/ml) staining of K562 (A), Molt4 (B) and NIH3T3 (C) lysate (35 μ g protein in RIPA buffer). Primary incubation was 1 hour. Detected by chemiluminescence.



EB11392 (0.3 μ g/ml) staining of K562 (A), Molt4 (B) and NIH3T3 (C) lysate (35 μ g protein in RIPA buffer). Primary incubation was 1 hour. Detected by chemiluminescence.



EB11392 (8 μ g/ml) staining of paraffin embedded Human Tonsil. Heat induced antigen retrieval with citrate buffer pH 6, HRP-staining.



EB11392 Negative Control showing staining of paraffin embedded Human Tonsil, with no primary antibody.

STAT5A Antibody (C-Term) - Background

This antibody is not expected to cross-react with STAT5B.

STAT5A Antibody (C-Term) - References

Src directly tyrosine-phosphorylates STAT5 on its activation site and is involved in erythropoietin-induced signaling pathway. Okutani Y, Kitanaka A, Tanaka T, Kamano H, Ohnishi H, Kubota Y, Ishida T, Takahara J. *Oncogene*. 2001 Oct 4;20(45):6643-50. PMID: 11641791