

PAX3 Antibody (internal region)
Peptide-affinity purified goat antibody
Catalog # AF3705a

Specification

PAX3 Antibody (internal region) - Product Information

Application	WB, IHC
Primary Accession	P23760
Other Accession	NP_852122.1 , NP_000429.2 , NP_039230.1 , NP_852123.1 , NP_852124.1 , NP_852126.1 , NP_852125.1 , NP_001120838.1 , 5077 , 18505 (mouse), 114502 (rat)
Reactivity	Human
Predicted	Mouse, Rat
Host	Goat
Clonality	Polyclonal
Concentration	0.5 mg/ml
Isotype	IgG
Calculated MW	52968

PAX3 Antibody (internal region) - Additional Information

Gene ID 5077

Other Names

Paired box protein Pax-3, HuP2, PAX3, HUP2

Format

0.5 mg/ml in Tris saline, 0.02% sodium azide, pH7.3 with 0.5% bovine serum albumin

Storage

Maintain refrigerated at 2-8°C for up to 6 months. For long term storage store at -20°C in small aliquots to prevent freeze-thaw cycles.

Precautions

PAX3 Antibody (internal region) is for research use only and not for use in diagnostic or therapeutic procedures.

PAX3 Antibody (internal region) - Protein Information

Name PAX3

Synonyms HUP2

Function

Transcription factor that may regulate cell proliferation, migration and apoptosis. Involved in neural development and myogenesis. Transcriptional activator of MITF, acting synergistically with

SOX10 (PubMed:21965087).

Cellular Location

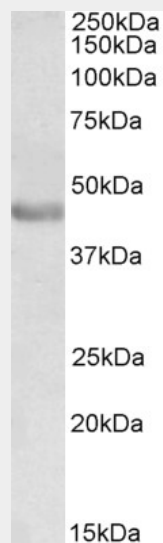
Nucleus.

PAX3 Antibody (internal region) - Protocols

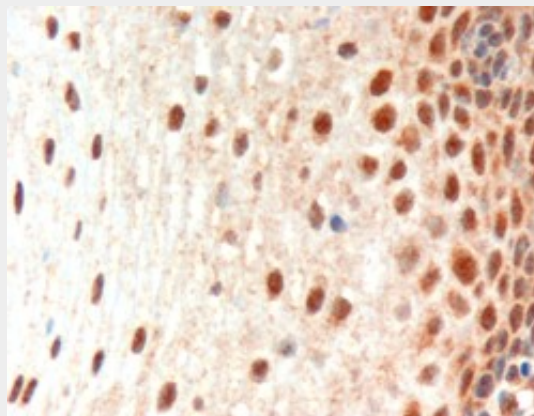
Provided below are standard protocols that you may find useful for product applications.

- [Western Blot](#)
- [Blocking Peptides](#)
- [Dot Blot](#)
- [Immunohistochemistry](#)
- [Immunofluorescence](#)
- [Immunoprecipitation](#)
- [Flow Cytometry](#)
- [Cell Culture](#)

PAX3 Antibody (internal region) - Images



AF1791a (0.3 μ g/ml) staining of Human Duodenum lysate (35 μ g protein in RIPA buffer). Primary incubation was 1 hour. Detected by chemiluminescence.



AF1791a (3 µg/ml) staining of paraffin embedded Human Oesophagus. Microwaved antigen retrieval with Tris/EDTA buffer pH9, HRP-staining. Data obtained using previous batch.

PAX3 Antibody (internal region) - Background

This antibody is expected to recognize isoforms PAX3 (NP_852122.1), PAX3d (NP_852123.1), PAX3e (NP_852124.1), PAX3g (NP_852126.1), PAX3h (NP_852125.1), and PAX3i (NP_001120838.1).

PAX3 Antibody (internal region) - References

High expression of the PAX3-FKHR oncoprotein is required to promote tumorigenesis of human myoblasts. Xia SJ, Holder DD, Pawel BR, Zhang C, Barr FG, The American journal of pathology 2009 Dec 175 (6): 2600-8. PMID: 19893043