

SOX11 (aa309-323) Antibody (internal region)
Peptide-affinity purified goat antibody
Catalog # AF3673a

Specification

SOX11 (aa309-323) Antibody (internal region) - Product Information

Application	WB
Primary Accession	P35716
Other Accession	NP_003099.1 , 6664 , 20666 (mouse) , 84046 (rat)
Reactivity	Human
Predicted	Mouse, Rat, Pig
Host	Goat
Clonality	Polyclonal
Concentration	0.5 mg/ml
Isotype	IgG
Calculated MW	46679

SOX11 (aa309-323) Antibody (internal region) - Additional Information

Gene ID 6664

Other Names

Transcription factor SOX-11, SOX11

Format

0.5 mg/ml in Tris saline, 0.02% sodium azide, pH7.3 with 0.5% bovine serum albumin

Storage

Maintain refrigerated at 2-8°C for up to 6 months. For long term storage store at -20°C in small aliquots to prevent freeze-thaw cycles.

Precautions

SOX11 (aa309-323) Antibody (internal region) is for research use only and not for use in diagnostic or therapeutic procedures.

SOX11 (aa309-323) Antibody (internal region) - Protein Information

Name SOX11

Function

Transcription factor that acts as a transcriptional activator (PubMed:24886874, PubMed:26543203). Binds cooperatively with POU3F2/BRN2 or POU3F1/OCT6 to gene promoters, which enhances transcriptional activation (By similarity). Acts as a transcriptional activator of TEAD2 by binding to its gene promoter and first intron (By similarity). Plays a redundant role with SOX4 and SOX12 in

cell survival of developing tissues such as the neural tube, branchial arches and somites, thereby contributing to organogenesis (By similarity).

Cellular Location

Nucleus {ECO:0000255|PROSITE-ProRule:PRU00267, ECO:0000269|PubMed:24886874, ECO:0000269|PubMed:35938035}

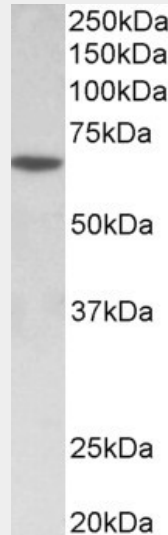
Tissue Location

Expressed primarily in the brain and heart, with low expression in the kidney, pancreas and muscle

SOX11 (aa309-323) Antibody (internal region) - Protocols

Provided below are standard protocols that you may find useful for product applications.

- [Western Blot](#)
- [Blocking Peptides](#)
- [Dot Blot](#)
- [Immunohistochemistry](#)
- [Immunofluorescence](#)
- [Immunoprecipitation](#)
- [Flow Cytometry](#)
- [Cell Culture](#)

SOX11 (aa309-323) Antibody (internal region) - Images

AF3673a (0.5 µg/ml) staining of MOLT4 lysate (35 µg protein in RIPA buffer). Primary incubation was 1 hour. Detected by chemiluminescence.

SOX11 (aa309-323) Antibody (internal region) - References

SOX11 expression in mantle cell lymphoma. Xu W, Li JY. Leuk Lymphoma. 2010 Nov;51(11):1962-7. PMID: 20919851