

HP alpha chain Antibody (internal region)
Peptide-affinity purified goat antibody
Catalog # AF3662a

Specification

HP alpha chain Antibody (internal region) - Product Information

Application	WB
Primary Accession	P00738
Other Accession	NP_005134.1 , NP_001119574.1 , 3240
Reactivity	Human
Host	Goat
Clonality	Polyclonal
Concentration	0.5 mg/ml
Isotype	IgG
Calculated MW	45205

HP alpha chain Antibody (internal region) - Additional Information

Gene ID 3240

Other Names

Haptoglobin, Zonulin, Haptoglobin alpha chain, Haptoglobin beta chain, HP

Format

0.5 mg/ml in Tris saline, 0.02% sodium azide, pH7.3 with 0.5% bovine serum albumin

Storage

Maintain refrigerated at 2-8°C for up to 6 months. For long term storage store at -20°C in small aliquots to prevent freeze-thaw cycles.

Precautions

HP alpha chain Antibody (internal region) is for research use only and not for use in diagnostic or therapeutic procedures.

HP alpha chain Antibody (internal region) - Protein Information

Name HP

Function

As a result of hemolysis, hemoglobin is found to accumulate in the kidney and is secreted in the urine. Haptoglobin captures, and combines with free plasma hemoglobin to allow hepatic recycling of heme iron and to prevent kidney damage. Haptoglobin also acts as an antioxidant, has antibacterial activity, and plays a role in modulating many aspects of the acute phase response. Hemoglobin/haptoglobin complexes are rapidly cleared by the macrophage CD163 scavenger receptor expressed on the surface of liver Kupfer cells through an endocytic lysosomal degradation pathway.

Cellular Location

Secreted.

Tissue Location

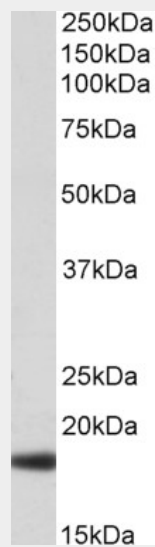
Expressed by the liver and secreted in plasma.

HP alpha chain Antibody (internal region) - Protocols

Provided below are standard protocols that you may find useful for product applications.

- [Western Blot](#)
- [Blocking Peptides](#)
- [Dot Blot](#)
- [Immunohistochemistry](#)
- [Immunofluorescence](#)
- [Immunoprecipitation](#)
- [Flow Cytometry](#)
- [Cell Culture](#)

HP alpha chain Antibody (internal region) - Images



AF3662a (0.01 µg/ml) staining of Human Liver lysate (35 µg protein in RIPA buffer). Primary incubation was 1 hour. Detected by chemiluminescence.

HP alpha chain Antibody (internal region) - Background

This antibody is expected to recognize both reported isoforms (NP_005134.1; NP_001119574.1).

HP alpha chain Antibody (internal region) - References

Haptoglobin phenotype in women with preeclampsia. Sammour RN, Nakhoul FM, Levy AP, Miller-Lotan R, Nakhoul N, Awad HR, Gonen R, Ohel G. Endocrine. 2010 Oct;38(2):303-8. PMID: 20972727