

**NPR3 (aa520-533) Antibody (C-Term)**  
Peptide-affinity purified goat antibody  
Catalog # AF3658a

**Specification**

---

**NPR3 (aa520-533) Antibody (C-Term) - Product Information**

Application	WB, IHC
Primary Accession	<a href="#">P17342</a>
Other Accession	<a href="#">NP_000899.1</a> , <a href="#">4883</a> , <a href="#">18162 (mouse)</a> , <a href="#">25339 (rat)</a>
Reactivity	Human
Predicted	Mouse, Rat, Pig, Dog
Host	Goat
Clonality	Polyclonal
Concentration	0.5 mg/ml
Isotype	IgG
Calculated MW	59808

**NPR3 (aa520-533) Antibody (C-Term) - Additional Information**

**Gene ID** 4883

**Other Names**

Atrial natriuretic peptide receptor 3, Atrial natriuretic peptide clearance receptor, Atrial natriuretic peptide receptor type C, ANP-C, ANPR-C, NPR-C, NPR3, ANPRC, C5orf23, NPRC

**Format**

0.5 mg/ml in Tris saline, 0.02% sodium azide, pH7.3 with 0.5% bovine serum albumin

**Storage**

Maintain refrigerated at 2-8°C for up to 6 months. For long term storage store at -20°C in small aliquots to prevent freeze-thaw cycles.

**Precautions**

NPR3 (aa520-533) Antibody (C-Term) is for research use only and not for use in diagnostic or therapeutic procedures.

**NPR3 (aa520-533) Antibody (C-Term) - Protein Information**

**Name** NPR3

**Synonyms** ANPRC, C5orf23, NPRC

**Function**

Receptor for the natriuretic peptide hormones, binding with similar affinities atrial natriuretic peptide NPPA/ANP, brain natriuretic peptide NPPB/BNP, and C-type natriuretic peptide NPPC/CNP. May function as a clearance receptor for NPPA, NPPB and NPPC, regulating their local

concentrations and effects. May regulate diuresis, blood pressure and skeletal development. Does not have guanylate cyclase activity.

#### Cellular Location

Cell membrane; Single-pass type I membrane protein

#### NPR3 (aa520-533) Antibody (C-Term) - Protocols

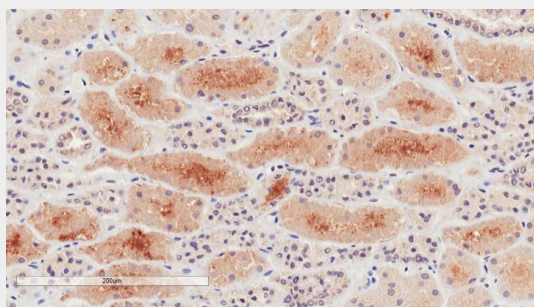
Provided below are standard protocols that you may find useful for product applications.

- [Western Blot](#)
- [Blocking Peptides](#)
- [Dot Blot](#)
- [Immunohistochemistry](#)
- [Immunofluorescence](#)
- [Immunoprecipitation](#)
- [Flow Cytometry](#)
- [Cell Culture](#)

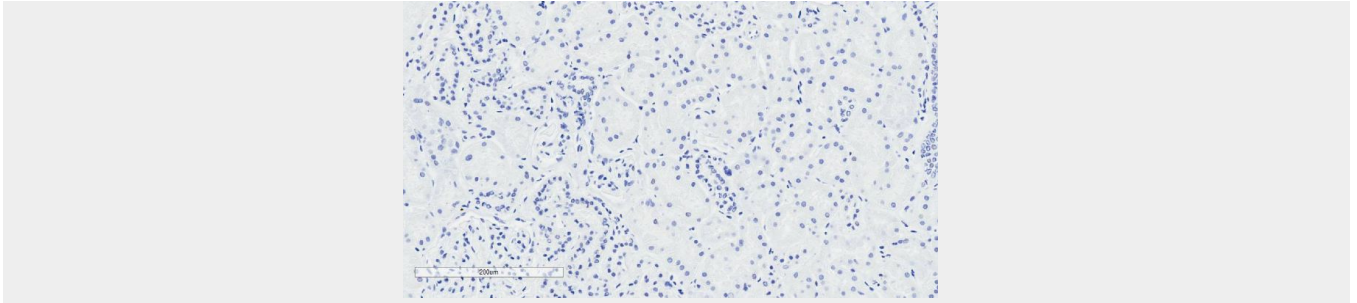
#### NPR3 (aa520-533) Antibody (C-Term) - Images



AF3658a (1  $\mu\text{g/ml}$ ) staining of Human Placenta lysate (35  $\mu\text{g}$  protein in RIPA buffer). Primary incubation was 1 hour. Detected by chemiluminescence.



AF3658a (2 $\mu\text{g/ml}$ ) staining of paraffin embedded Human Kidney. Microwaved antigen retrieval with citrate buffer pH 6, HRP-staining.



AF3658a Negative Control showing staining of paraffin embedded Human Kidney, with no primary antibody.

### **NPR3 (aa520-533) Antibody (C-Term) - Background**

The immunizing peptide represents the cytoplasmic part of the protein.

### **NPR3 (aa520-533) Antibody (C-Term) - References**

Greater expression of inflammatory cytokines, adrenomedullin, and natriuretic peptide receptor-C in epicardial adipose tissue in coronary artery disease. Shibasaki I, Nishikimi T, Mochizuki Y, Yamada Y, Yoshitatsu M, Inoue Y, Kuwata T, Ogawa H, Tsuchiya G, Ishimitsu T, Fukuda H. Regul Pept. 2010 Dec 10;165(2-3):210-7. PMID: 20691218