

IGF2 (aa81-93) Antibody (internal region)
Peptide-affinity purified goat antibody
Catalog # AF3604a

Specification

IGF2 (aa81-93) Antibody (internal region) - Product Information

| | |
|-------------------|---|
| Application | IHC |
| Primary Accession | P01344 |
| Other Accession | NP_000603.1 , NP_001121070.1 , 3481 , 16002 (mouse), 24483 (rat) |
| Reactivity | Human |
| Predicted | Mouse, Rat, Pig, Dog |
| Host | Goat |
| Clonality | Polyclonal |
| Concentration | 0.5 mg/ml |
| Isotype | IgG |
| Calculated MW | 20140 |

IGF2 (aa81-93) Antibody (internal region) - Additional Information

Gene ID 3481

Other Names

Insulin-like growth factor II, IGF-II, Somatomedin-A, T3M-11-derived growth factor, Insulin-like growth factor II, Insulin-like growth factor II Ala-25 Del, Preptin, IGF2

Format

0.5 mg/ml in Tris saline, 0.02% sodium azide, pH7.3 with 0.5% bovine serum albumin

Storage

Maintain refrigerated at 2-8°C for up to 6 months. For long term storage store at -20°C in small aliquots to prevent freeze-thaw cycles.

Precautions

IGF2 (aa81-93) Antibody (internal region) is for research use only and not for use in diagnostic or therapeutic procedures.

IGF2 (aa81-93) Antibody (internal region) - Protein Information

Name IGF2 ([HGNC:5466](#))

Function

The insulin-like growth factors possess growth-promoting activity (By similarity). Major fetal growth hormone in mammals. Plays a key role in regulating fetoplacental development. IGF2 is influenced by placental lactogen. Also involved in tissue differentiation. In adults, involved in glucose metabolism in adipose tissue, skeletal muscle and liver (Probable). Acts as a ligand for integrin which is required for IGF2 signaling (PubMed:<a href="http://www.uniprot.org/citations/28873464"

target="_blank">28873464). Positively regulates myogenic transcription factor MYOD1 function by facilitating the recruitment of transcriptional coactivators, thereby controlling muscle terminal differentiation (By similarity). Inhibits myoblast differentiation and modulates metabolism via increasing the mitochondrial respiration rate (By similarity).

Cellular Location

Secreted.

Tissue Location

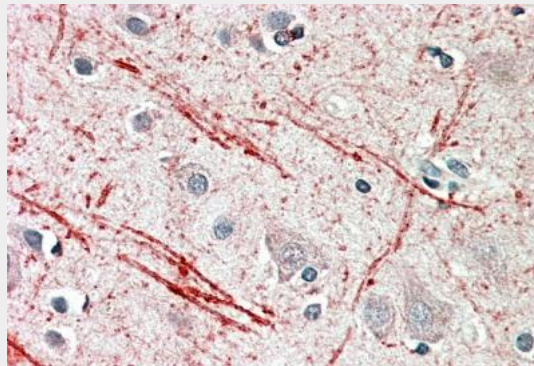
Expressed in heart, placenta, lung, liver, muscle, kidney, tongue, limb, eye and pancreas.

IGF2 (aa81-93) Antibody (internal region) - Protocols

Provided below are standard protocols that you may find useful for product applications.

- [Western Blot](#)
- [Blocking Peptides](#)
- [Dot Blot](#)
- [Immunohistochemistry](#)
- [Immunofluorescence](#)
- [Immunoprecipitation](#)
- [Flow Cytometry](#)
- [Cell Culture](#)

IGF2 (aa81-93) Antibody (internal region) - Images



AF3604a (5 µg/ml) staining of paraffin embedded Human Cerebellum. Steamed antigen retrieval with citrate buffer pH 6, AP-staining.

IGF2 (aa81-93) Antibody (internal region) - Background

This antibody is expected to recognize both reported isoforms (NP_000603.1; NP_001121070.1). Reported variants represent identical protein: NP_000603.1, NP_001007140.2

IGF2 (aa81-93) Antibody (internal region) - References

Long range interactions regulate Igf2 gene transcription during skeletal muscle differentiation. Alzhanov DT, McInerney SF, Rotwein P. J Biol Chem. 2010 Dec 10;285(50):38969-77. PMID: 20937833