

HSPC117 (aa201-215) Antibody (internal region)
Peptide-affinity purified goat antibody
Catalog # AF3554a

Specification

HSPC117 (aa201-215) Antibody (internal region) - Product Information

Application	WB, IHC
Primary Accession	O9Y3I0
Other Accession	NP_055121.1 , 51493 , 28088 (mouse) , 362855 (rat)
Reactivity	Human
Predicted	Mouse, Rat, Pig, Dog
Host	Goat
Clonality	Polyclonal
Concentration	0.5 mg/ml
Isotype	IgG
Calculated MW	55210

HSPC117 (aa201-215) Antibody (internal region) - Additional Information

Gene ID 51493

Other Names

tRNA-splicing ligase RtcB homolog {ECO:0000255|HAMAP-Rule:MF_03144}, 6.5.1.3
{ECO:0000255|HAMAP-Rule:MF_03144}, RTCB {ECO:0000255|HAMAP-Rule:MF_03144}, C22orf28

Format

0.5 mg/ml in Tris saline, 0.02% sodium azide, pH7.3 with 0.5% bovine serum albumin

Storage

Maintain refrigerated at 2-8°C for up to 6 months. For long term storage store at -20°C in small aliquots to prevent freeze-thaw cycles.

Precautions

HSPC117 (aa201-215) Antibody (internal region) is for research use only and not for use in diagnostic or therapeutic procedures.

HSPC117 (aa201-215) Antibody (internal region) - Protein Information

Name RTCB {ECO:0000255|HAMAP-Rule:MF_03144}

Synonyms C22orf28

Function

Catalytic subunit of the tRNA-splicing ligase complex that acts by directly joining spliced tRNA halves to mature-sized tRNAs by incorporating the precursor-derived splice junction phosphate into the mature tRNA as a canonical 3',5'-phosphodiester. May act as an RNA ligase with broad

substrate specificity, and may function toward other RNAs.

Cellular Location

Nucleus. Cytoplasm {ECO:0000255|HAMAP-Rule:MF_03144, ECO:0000269|PubMed:24608264}

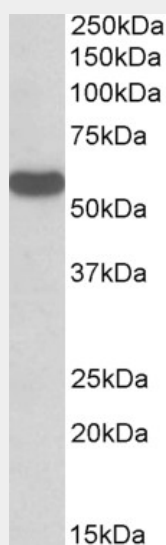
Note=Enters into the nucleus in case of active transcription while it accumulates in cytosol when transcription level is low

HSPC117 (aa201-215) Antibody (internal region) - Protocols

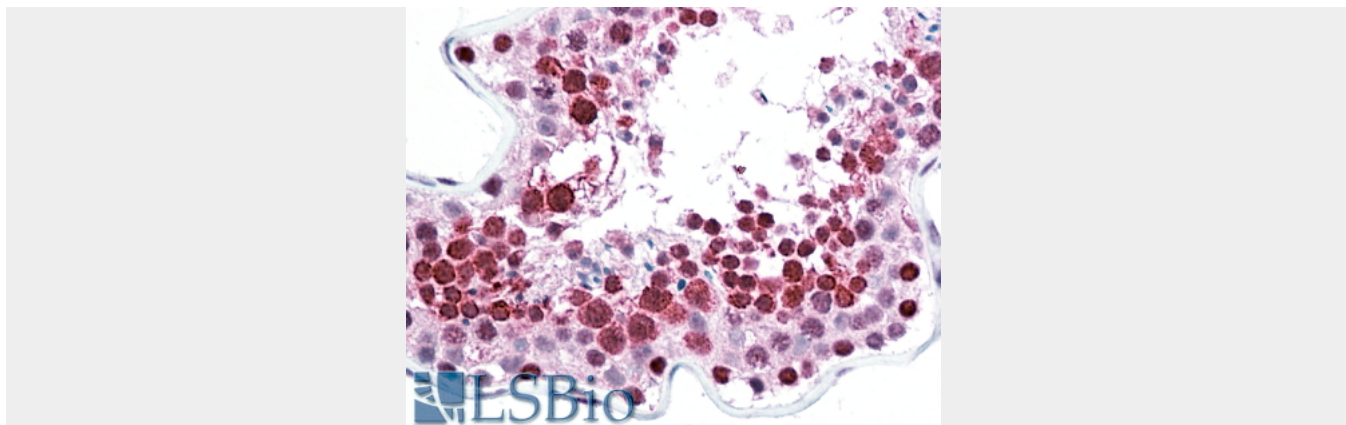
Provided below are standard protocols that you may find useful for product applications.

- [Western Blot](#)
- [Blocking Peptides](#)
- [Dot Blot](#)
- [Immunohistochemistry](#)
- [Immunofluorescence](#)
- [Immunoprecipitation](#)
- [Flow Cytometry](#)
- [Cell Culture](#)

HSPC117 (aa201-215) Antibody (internal region) - Images



EB10954 (0.3 μ g/ml) staining of HeLa lysate (35 μ g protein in RIPA buffer). Primary incubation was 1 hour. Detected by chemiluminescence.



EB010954 (5µg/ml) staining of paraffin embedded Human Testis. Steamed antigen retrieval with citrate buffer pH 6, AP-staining.

HSPC117 (aa201-215) Antibody (internal region) - References

HSPC117 is the essential subunit of a human tRNA splicing ligase complex. Popow J, Englert M, Weitzer S, Schleiffer A, Mierzwa B, Mechtler K, Trowitzsch S, Will CL, Lührmann R, Söll D, Martinez J. Science. 2011 Feb 11;331(6018):760-4. PMID: 21311021