

CD56 / NCAM1 (isoform 2) Antibody (internal region)
Peptide-affinity purified goat antibody
Catalog # AF3553a

Specification

CD56 / NCAM1 (isoform 2) Antibody (internal region) - Product Information

Application	WB, IHC, FC
Primary Accession	P13591
Other Accession	NP_851996.2 , 4684 , 24586 (rat)
Reactivity	Human
Predicted	Rat, Pig
Host	Goat
Clonality	Polyclonal
Concentration	0.5 mg/ml
Isotype	IgG
Calculated MW	94574

CD56 / NCAM1 (isoform 2) Antibody (internal region) - Additional Information

Gene ID 4684

Other Names

Neural cell adhesion molecule 1, N-CAM-1, NCAM-1, CD56, NCAM1, NCAM

Format

0.5 mg/ml in Tris saline, 0.02% sodium azide, pH7.3 with 0.5% bovine serum albumin

Storage

Maintain refrigerated at 2-8°C for up to 6 months. For long term storage store at -20°C in small aliquots to prevent freeze-thaw cycles.

Precautions

CD56 / NCAM1 (isoform 2) Antibody (internal region) is for research use only and not for use in diagnostic or therapeutic procedures.

CD56 / NCAM1 (isoform 2) Antibody (internal region) - Protein Information

Name NCAM1 ([HGNC:7656](#))

Synonyms NCAM

Function

This protein is a cell adhesion molecule involved in neuron- neuron adhesion, neurite fasciculation, outgrowth of neurites, etc. (Microbial infection) Acts as a receptor for Zika virus.

Cellular Location

[Isoform 1]: Cell membrane; Single-pass type I membrane protein [Isoform 3]: Cell membrane;

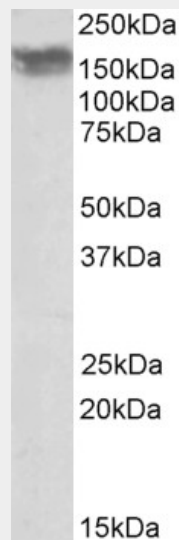
Lipid-anchor, GPI- anchor [Isoform 5]: Secreted.

CD56 / NCAM1 (isoform 2) Antibody (internal region) - Protocols

Provided below are standard protocols that you may find useful for product applications.

- [Western Blot](#)
- [Blocking Peptides](#)
- [Dot Blot](#)
- [Immunohistochemistry](#)
- [Immunofluorescence](#)
- [Immunoprecipitation](#)
- [Flow Cytometry](#)
- [Cell Culture](#)

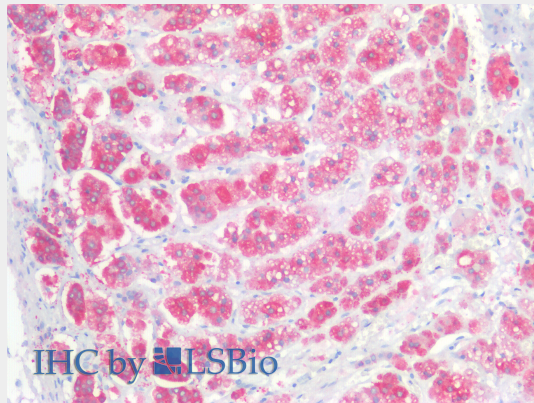
CD56 / NCAM1 (isoform 2) Antibody (internal region) - Images



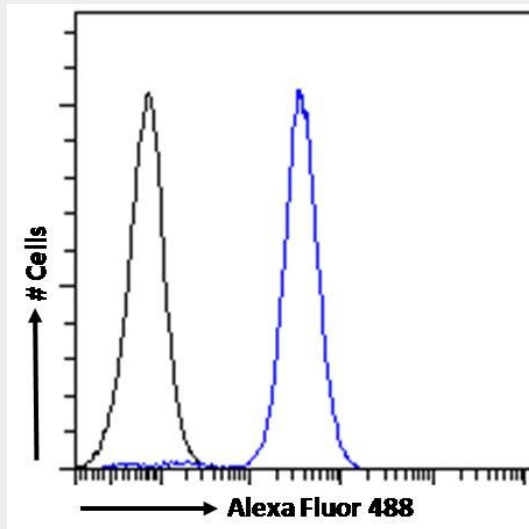
AF3553a (0.01 $\mu\text{g/ml}$) staining of Human Frontal Cortex lysate (35 μg protein in RIPA buffer). Primary incubation was 1 hour. Detected by chemiluminescence.



EB10948 (0.01µg/ml) staining of Human Frontal Cortex lysate (35µg protein in RIPA buffer). Primary incubation was 1 hour. Detected by chemiluminescence.



EB10948 (5µg/ml) staining of paraffin embedded Human Adrenal Gland. Steamed antigen retrieval with citrate buffer pH 6, AP-staining.



EB10948 Flow cytometric analysis of paraformaldehyde fixed U251 cells (blue line), permeabilized with 0.5% Triton. Primary incubation 1hr (10ug/ml) followed by Alexa Fluor 488 secondary antibody (1ug/ml). IgG control: Unimmunized goat IgG (black line) for

CD56 / NCAM1 (isoform 2) Antibody (internal region) - Background

This antibody is expected to recognize reported isoform 2 (NP_851996.2) only.

CD56 / NCAM1 (isoform 2) Antibody (internal region) - References

CD56 (NCAM)
 expression in ameloblastomas and other odontogenic lesions. Cairns L, Naidu A, Robinson CM, Sloan P, Wright JM, Hunter KD. Histopathology. 2010 Oct;57(4):544-8. PMID: 20875069