

**ITIH4 (aa890-903) Antibody (C-Term)**  
Peptide-affinity purified goat antibody  
Catalog # AF3543a

### Specification

---

#### ITIH4 (aa890-903) Antibody (C-Term) - Product Information

Application	WB
Primary Accession	<a href="#">Q14624</a>
Other Accession	<a href="#">NP_002209.2</a> , <a href="#">NP_001159921.1</a> , <a href="#">3700</a>
Reactivity	Human
Host	Goat
Clonality	Polyclonal
Concentration	0.5 mg/ml
Isotype	IgG
Calculated MW	103357

#### ITIH4 (aa890-903) Antibody (C-Term) - Additional Information

Gene ID 3700

#### Other Names

Inter-alpha-trypsin inhibitor heavy chain H4, ITI heavy chain H4, ITI-HC4, Inter-alpha-inhibitor heavy chain 4, Inter-alpha-trypsin inhibitor family heavy chain-related protein, IHRP, Plasma kallikrein sensitive glycoprotein 120, Gp120, PK-120, 70 kDa inter-alpha-trypsin inhibitor heavy chain H4, 35 kDa inter-alpha-trypsin inhibitor heavy chain H4, ITIH4, IHRP, ITIHL1, PK120

#### Format

0.5 mg/ml in Tris saline, 0.02% sodium azide, pH7.3 with 0.5% bovine serum albumin

#### Storage

Maintain refrigerated at 2-8°C for up to 6 months. For long term storage store at -20°C in small aliquots to prevent freeze-thaw cycles.

#### Precautions

ITIH4 (aa890-903) Antibody (C-Term) is for research use only and not for use in diagnostic or therapeutic procedures.

#### ITIH4 (aa890-903) Antibody (C-Term) - Protein Information

Name ITIH4

Synonyms IHRP, ITIHL1, PK120

#### Function

Type II acute-phase protein (APP) involved in inflammatory responses to trauma. May also play a role in liver development or regeneration.

**Cellular Location**  
Secreted.

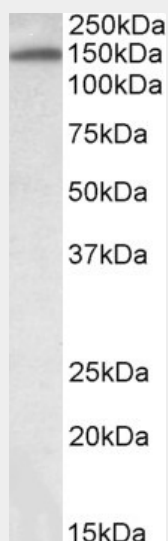
**Tissue Location**  
Liver specific.

### ITIH4 (aa890-903) Antibody (C-Term) - Protocols

Provided below are standard protocols that you may find useful for product applications.

- [Western Blot](#)
- [Blocking Peptides](#)
- [Dot Blot](#)
- [Immunohistochemistry](#)
- [Immunofluorescence](#)
- [Immunoprecipitation](#)
- [Flow Cytometry](#)
- [Cell Culture](#)

### ITIH4 (aa890-903) Antibody (C-Term) - Images



AF3543a (0.03  $\mu$ g/ml) staining of Human Placenta lysate (35  $\mu$ g protein in RIPA buffer). Primary incubation was 1 hour. Detected by chemiluminescence.

### ITIH4 (aa890-903) Antibody (C-Term) - Background

This antibody is expected to recognize both reported isoforms (NP\_002209.2; NP\_001159921.1).

### ITIH4 (aa890-903) Antibody (C-Term) - References

Progenitor/stem cells give rise to liver cancer due to aberrant TGF-beta and IL-6 signaling. Tang Y, Kitisin K, Jogunoori W, Li C, Deng CX, Mueller SC, Resson HW, Rashid A, He AR, Mendelson JS, Jessup JM, Shetty K, Zasloff M, Mishra B, Reddy EP, Johnson L, Mishra L, Proceedings of the National Academy of Sciences of the United States of America 2008 Feb 105 (7): 2445-50. PMID: 18263735