

**APOL1 (aa297-309) Antibody (internal region)**  
Peptide-affinity purified goat antibody  
Catalog # AF3541a

**Specification**

---

**APOL1 (aa297-309) Antibody (internal region) - Product Information**

Application	<b>WB</b>
Primary Accession	<a href="#">O14791</a>
Other Accession	<a href="#">NP_003652.2</a> , <a href="#">NP_663318.1</a> , <a href="#">NP_001130013.1</a> , <a href="#">8542</a>
Reactivity	<b>Human</b>
Host	<b>Goat</b>
Clonality	<b>Polyclonal</b>
Concentration	<b>0.5 mg/ml</b>
Isotype	<b>IgG</b>
Calculated MW	<b>43974</b>

**APOL1 (aa297-309) Antibody (internal region) - Additional Information**

**Gene ID** 8542

**Other Names**

Apolipoprotein L1, Apolipoprotein L, Apo-L, ApoL, Apolipoprotein L-I, ApoL-I, APOL1, APOL

**Format**

0.5 mg/ml in Tris saline, 0.02% sodium azide, pH7.3 with 0.5% bovine serum albumin

**Storage**

Maintain refrigerated at 2-8°C for up to 6 months. For long term storage store at -20°C in small aliquots to prevent freeze-thaw cycles.

**Precautions**

APOL1 (aa297-309) Antibody (internal region) is for research use only and not for use in diagnostic or therapeutic procedures.

**APOL1 (aa297-309) Antibody (internal region) - Protein Information**

**Name** APOL1

**Synonyms** APOL

**Function**

May play a role in lipid exchange and transport throughout the body. May participate in reverse cholesterol transport from peripheral cells to the liver.

**Cellular Location**

Secreted.

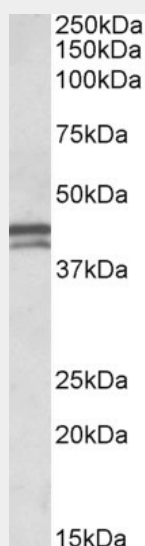
**Tissue Location**

Plasma. Found on APOA-I-containing high density lipoprotein (HDL3). Expressed in pancreas, lung, prostate, liver, placenta and spleen

**APOL1 (aa297-309) Antibody (internal region) - Protocols**

Provided below are standard protocols that you may find useful for product applications.

- [Western Blot](#)
- [Blocking Peptides](#)
- [Dot Blot](#)
- [Immunohistochemistry](#)
- [Immunofluorescence](#)
- [Immunoprecipitation](#)
- [Flow Cytometry](#)
- [Cell Culture](#)

**APOL1 (aa297-309) Antibody (internal region) - Images**

AF3541a (0.1 µg/ml) staining of Human Placenta lysate (35 µg protein in RIPA buffer). Primary incubation was 1 hour. Detected by chemiluminescence.

**APOL1 (aa297-309) Antibody (internal region) - Background**

This antibody is expected to recognize all three reported isoforms (NP\_003652.2; NP\_663318.1; NP\_001130013.1). Reported variants represent identical protein: NP\_003652.2, NP\_001130012.1

**APOL1 (aa297-309) Antibody (internal region) - References**

Apolipoprotein L-I promotes trypanosome lysis by forming pores in lysosomal membranes.  
PÃ©rez-Morga D, Vanhollebeke B, Paturiaux-Hanocq F, Nolan DP, Lins L, HombliÃ© F, Vanhamme L, Tebabi P, Pays A, Poelvoorde P, Jacquet A, Brasseur R, Pays E, Science (New York, N.Y.) 2005 Jul 309 (5733): 469-72. PMID: 16020735