

MTHFD1L (aa535-538) Antibody (internal region)
Peptide-affinity purified goat antibody
Catalog # AF3538a

Specification

MTHFD1L (aa535-538) Antibody (internal region) - Product Information

Application	WB
Primary Accession	Q6UB35
Other Accession	NP_056255.2 , 25902 , 270685 (mouse) , 361472 (rat)
Reactivity	Human, Mouse, Rat
Host	Goat
Clonality	Polyclonal
Concentration	0.5 mg/ml
Isotype	IgG
Calculated MW	105790

MTHFD1L (aa535-538) Antibody (internal region) - Additional Information

Gene ID 25902

Other Names

Monofunctional C1-tetrahydrofolate synthase, mitochondrial, 6.3.4.3, Formyltetrahydrofolate synthetase, MTHFD1L, FTHFSDC1

Format

0.5 mg/ml in Tris saline, 0.02% sodium azide, pH7.3 with 0.5% bovine serum albumin

Storage

Maintain refrigerated at 2-8°C for up to 6 months. For long term storage store at -20°C in small aliquots to prevent freeze-thaw cycles.

Precautions

MTHFD1L (aa535-538) Antibody (internal region) is for research use only and not for use in diagnostic or therapeutic procedures.

MTHFD1L (aa535-538) Antibody (internal region) - Protein Information

Name MTHFD1L ([HGNC:21055](#))

Synonyms FTHFSDC1

Function

May provide the missing metabolic reaction required to link the mitochondria and the cytoplasm in the mammalian model of one-carbon folate metabolism complementing thus the enzymatic activities of MTHFD2.

Cellular Location

Mitochondrion.

Tissue Location

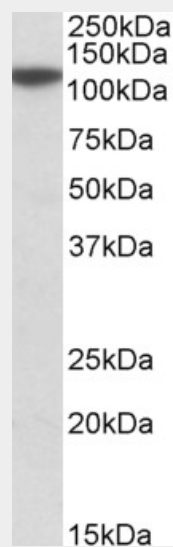
Detected in most tissues, highest expression found in placenta, thymus and brain. Low expression is found in liver and skeletal muscle. Up-regulated in colon adenocarcinoma

MTHFD1L (aa535-538) Antibody (internal region) - Protocols

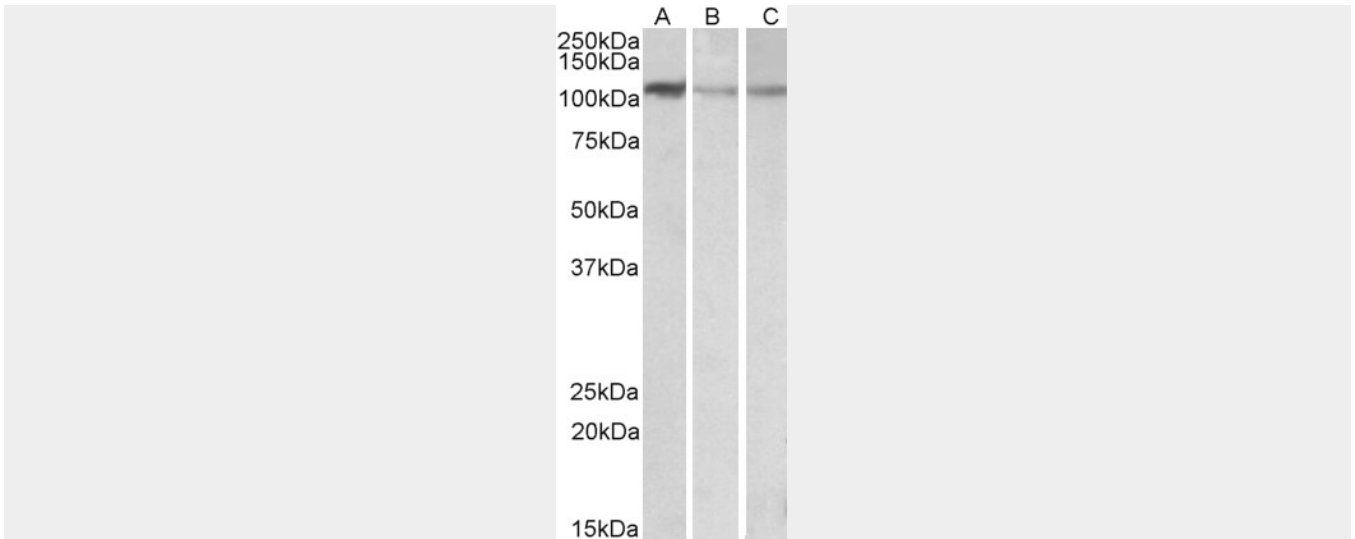
Provided below are standard protocols that you may find useful for product applications.

- [Western Blot](#)
- [Blocking Peptides](#)
- [Dot Blot](#)
- [Immunohistochemistry](#)
- [Immunofluorescence](#)
- [Immunoprecipitation](#)
- [Flow Cytometry](#)
- [Cell Culture](#)

MTHFD1L (aa535-538) Antibody (internal region) - Images



AF3538a (0.1 µg/ml) staining of Human Cerebellum lysate (35 µg protein in RIPA buffer). Primary incubation was 1 hour. Detected by chemiluminescence.



AF3538a (0.1 µg/ml) staining of NIH3T3 (A), Mouse Brain (B) and Rat Brain (C) lysates (35 µg protein in RIPA buffer). Primary incubation was 1 hour. Detected by chemiluminescence.

MTHFD1L (aa535-538) Antibody (internal region) - References

A common variant in MTHFD1L is associated with neural tube defects and mRNA splicing efficiency. Parle-McDermott A, Pangilinan F, O'Brien KK, Mills JL, Magee AM, Troendle J, Sutton M, Scott JM, Kirke PN, Molloy AM, Brody LC, Human mutation 2009 Dec 30 (12): 1650-6. PMID: 19777576