

STS2 / TULA (aa470-482) Antibody (internal region)
Peptide-affinity purified goat antibody
Catalog # AF3528a

Specification

STS2 / TULA (aa470-482) Antibody (internal region) - Product Information

Application	WB, IHC
Primary Accession	P57075
Other Accession	NP_061834.1 , NP_001001895.1 , 53347
Reactivity	Human
Host	Goat
Clonality	Polyclonal
Concentration	0.5 mg/ml
Isotype	IgG
Calculated MW	74123

STS2 / TULA (aa470-482) Antibody (internal region) - Additional Information

Gene ID 53347

Other Names

Ubiquitin-associated and SH3 domain-containing protein A, Cbl-interacting protein 4, CLIP4, Suppressor of T-cell receptor signaling 2, STS-2, T-cell ubiquitin ligand 1, TULA-1, UBASH3A, STS2

Format

0.5 mg/ml in Tris saline, 0.02% sodium azide, pH7.3 with 0.5% bovine serum albumin

Storage

Maintain refrigerated at 2-8°C for up to 6 months. For long term storage store at -20°C in small aliquots to prevent freeze-thaw cycles.

Precautions

STS2 / TULA (aa470-482) Antibody (internal region) is for research use only and not for use in diagnostic or therapeutic procedures.

STS2 / TULA (aa470-482) Antibody (internal region) - Protein Information

Name UBASH3A

Synonyms STS2

Function

Interferes with CBL-mediated down-regulation and degradation of receptor-type tyrosine kinases. Promotes accumulation of activated target receptors, such as T-cell receptors, EGFR and PDGFRB, on the cell surface. Exhibits negligible protein tyrosine phosphatase activity at neutral pH. May act as a dominant-negative regulator of UBASH3B- dependent dephosphorylation. May inhibit dynamin-dependent endocytic pathways by functionally sequestering dynamin via its SH3 domain.

Cellular Location

Cytoplasm. Nucleus.

Tissue Location

Highest expression of UBASH3A in tissues belonging to the immune system, including spleen, peripheral blood leukocytes, thymus and bone marrow.

STS2 / TULA (aa470-482) Antibody (internal region) - Protocols

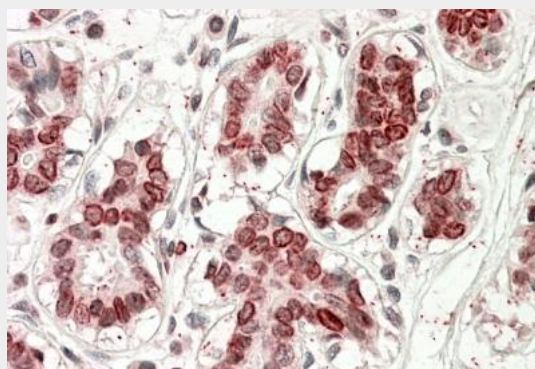
Provided below are standard protocols that you may find useful for product applications.

- [Western Blot](#)
- [Blocking Peptides](#)
- [Dot Blot](#)
- [Immunohistochemistry](#)
- [Immunofluorescence](#)
- [Immunoprecipitation](#)
- [Flow Cytometry](#)
- [Cell Culture](#)

STS2 / TULA (aa470-482) Antibody (internal region) - Images



AF3528a (1 μ g/ml) staining of Human Spleen lysate (35 μ g protein in RIPA buffer). Primary incubation was 1 hour. Detected by chemiluminescence.



AF3528a (3.8 µg/ml) staining of paraffin embedded Human Breast. Steamed antigen retrieval with citrate buffer pH 6, AP-staining.

STS2 / TULA (aa470-482) Antibody (internal region) - Background

This antibody is expected to recognize both reported isoforms (NP_061834.1; NP_001001895.1).

STS2 / TULA (aa470-482) Antibody (internal region) - References

Suppressors of T-cell receptor signaling Sts-1 and Sts-2 bind to Cbl and inhibit endocytosis of receptor tyrosine kinases. Kowanetz K, Crosetto N, Haglund K, Schmidt MH, Heldin CH, Dikic I. J Biol Chem. 2004 Jul 30;279(31):32786-95. PMID: 15159412