

**PDIA2 (aa477-481) Antibody (internal region, near C-Term)**  
Peptide-affinity purified goat antibody  
Catalog # AF3525a

### Specification

---

#### PDIA2 (aa477-481) Antibody (internal region, near C-Term) - Product Information

Application	WB, IHC
Primary Accession	<a href="#">Q13087</a>
Other Accession	<a href="#">NP_006840.2</a> , <a href="#">64714</a> , <a href="#">69191 (mouse)</a> , <a href="#">287164 (rat)</a>
Reactivity	Human, Rat
Predicted	Mouse
Host	Goat
Clonality	Polyclonal
Concentration	0.5 mg/ml
Isotype	IgG
Calculated MW	58206

#### PDIA2 (aa477-481) Antibody (internal region, near C-Term) - Additional Information

**Gene ID** 64714

#### Other Names

Protein disulfide-isomerase A2, 5.3.4.1, Pancreas-specific protein disulfide isomerase, PDIP, PDIA2, PDIP

#### Format

0.5 mg/ml in Tris saline, 0.02% sodium azide, pH7.3 with 0.5% bovine serum albumin

#### Storage

Maintain refrigerated at 2-8°C for up to 6 months. For long term storage store at -20°C in small aliquots to prevent freeze-thaw cycles.

#### Precautions

PDIA2 (aa477-481) Antibody (internal region, near C-Term) is for research use only and not for use in diagnostic or therapeutic procedures.

#### PDIA2 (aa477-481) Antibody (internal region, near C-Term) - Protein Information

**Name** PDIA2

**Synonyms** PDIP

#### Function

Acts as an intracellular estrogen-binding protein. May be involved in modulating cellular levels and biological functions of estrogens in the pancreas. May act as a chaperone that inhibits aggregation of misfolded proteins.

**Cellular Location**

Endoplasmic reticulum lumen {ECO:0000255|PROSITE- ProRule:PRU10138}

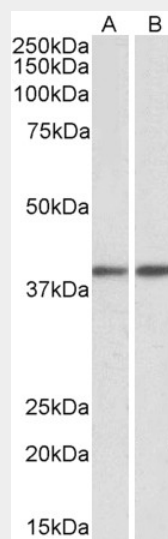
**Tissue Location**

Highly expressed in pancreas (at protein level).

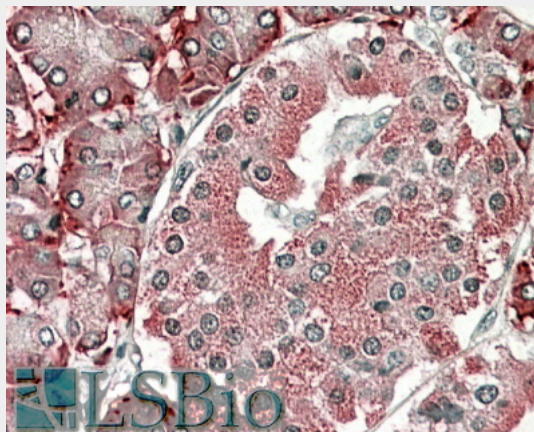
**PDIA2 (aa477-481) Antibody (internal region, near C-Term) - Protocols**

Provided below are standard protocols that you may find useful for product applications.

- [Western Blot](#)
- [Blocking Peptides](#)
- [Dot Blot](#)
- [Immunohistochemistry](#)
- [Immunofluorescence](#)
- [Immunoprecipitation](#)
- [Flow Cytometry](#)
- [Cell Culture](#)

**PDIA2 (aa477-481) Antibody (internal region, near C-Term) - Images**

AF3525a (0.1  $\mu\text{g/ml}$ ) staining of Human (A), Mouse (B) and Rat (C) Pancreas lysates (35  $\mu\text{g}$  protein in RIPA buffer). Primary incubation was 1 hour. Detected by chemiluminescence.



AF3525a (3.8 µg/ml) staining of paraffin embedded Human Pancreas. Steamed antigen retrieval with citrate buffer pH 6, AP-staining.

**PDIA2 (aa477-481) Antibody (internal region, near C-Term) - References**

Protein disulfide isomerase-immunopositive inclusions in patients with Alzheimer disease. Honjo Y, Ito H, Horibe T, Takahashi R, Kawakami K. Brain Res. 2010 Aug 19;1349:90-6. PMID: 20550946