

NDR1 / STK38 Antibody (C-Term, near)
Peptide-affinity purified goat antibody
Catalog # AF3490a

Specification

NDR1 / STK38 Antibody (C-Term, near) - Product Information

Application	WB
Primary Accession	O15208
Other Accession	NP_009202.1 , 11329 , 361813 (rat)
Reactivity	Human, Rat
Predicted	Pig, Dog
Host	Goat
Clonality	Polyclonal
Concentration	0.5 mg/ml
Isotype	IgG
Calculated MW	54190

NDR1 / STK38 Antibody (C-Term, near) - Additional Information

Gene ID 11329

Other Names

Serine/threonine-protein kinase 38, 2.7.11.1, NDR1 protein kinase, Nuclear Dbf2-related kinase 1, STK38 {ECO:0000312|EMBL:AAH12085.1}

Format

0.5 mg/ml in Tris saline, 0.02% sodium azide, pH7.3 with 0.5% bovine serum albumin

Storage

Maintain refrigerated at 2-8°C for up to 6 months. For long term storage store at -20°C in small aliquots to prevent freeze-thaw cycles.

Precautions

NDR1 / STK38 Antibody (C-Term, near) is for research use only and not for use in diagnostic or therapeutic procedures.

NDR1 / STK38 Antibody (C-Term, near) - Protein Information

Name STK38 {ECO:0000303|PubMed:17906693, ECO:0000312|HGNC:HGNC:17847}

Function

Serine/threonine-protein kinase that acts as a negative regulator of MAP3K1/2 signaling (PubMed:12493777, PubMed:15197186, PubMed:17906693, PubMed:7761441). Converts MAP3K2 from its phosphorylated form to its non-phosphorylated form and inhibits

autophosphorylation of MAP3K2 (PubMed:12493777, PubMed:15197186, PubMed:17906693, PubMed:7761441). Acts as an ufmylation 'reader' in a kinase-independent manner: specifically recognizes and binds mono- ufmylated histone H4 in response to DNA damage, promoting the recruitment of SUV39H1 to the double-strand breaks, resulting in ATM activation (PubMed:32537488).

Cellular Location

Nucleus. Cytoplasm. Chromosome Note=Localizes to DNA double-strand breaks in response to DNA damage

Tissue Location

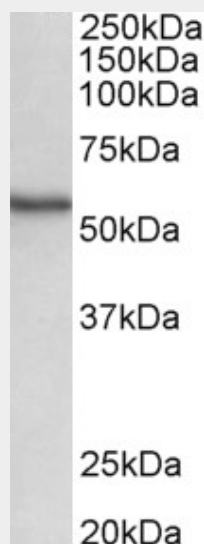
Ubiquitously expressed with highest levels observed in peripheral blood leukocytes.

NDR1 / STK38 Antibody (C-Term, near) - Protocols

Provided below are standard protocols that you may find useful for product applications.

- [Western Blot](#)
- [Blocking Peptides](#)
- [Dot Blot](#)
- [Immunohistochemistry](#)
- [Immunofluorescence](#)
- [Immunoprecipitation](#)
- [Flow Cytometry](#)
- [Cell Culture](#)

NDR1 / STK38 Antibody (C-Term, near) - Images



AF3490a (0.5 µg/ml) staining of Human Spleen lysate (35 µg protein in RIPA buffer). Primary incubation was 1 hour. Detected by chemiluminescence.

NDR1 / STK38 Antibody (C-Term, near) - Background

This antibody is NOT expected to cross-react with STK38L (GeneID 23012).

NDR1 / STK38 Antibody (C-Term, near) - References

Differential NDR/LATS interactions with the human MOB family reveal a negative role for human MOB2 in the regulation of human NDR kinases. Kohler RS, Schmitz D, Cornils H, Hemmings BA, Hergovich A, Molecular and cellular biology 2010 Sep 30 (18): 4507-20. PMID: 20624913