

PRDM14 (aa533-544) Antibody (internal region)
Peptide-affinity purified goat antibody
Catalog # AF3481a

Specification

PRDM14 (aa533-544) Antibody (internal region) - Product Information

Application	WB
Primary Accession	O9GZV8
Other Accession	NP_078780.1 , 63978 , 383491 (mouse) , 100365184 (rat)
Reactivity	Human
Predicted	Mouse, Rat, Pig, Dog
Host	Goat
Clonality	Polyclonal
Concentration	0.5 mg/ml
Isotype	IgG
Calculated MW	64062

PRDM14 (aa533-544) Antibody (internal region) - Additional Information

Gene ID 63978

Other Names

PR domain zinc finger protein 14, 2.1.1.-, PR domain-containing protein 14, PRDM14

Format

0.5 mg/ml in Tris saline, 0.02% sodium azide, pH7.3 with 0.5% bovine serum albumin

Storage

Maintain refrigerated at 2-8°C for up to 6 months. For long term storage store at -20°C in small aliquots to prevent freeze-thaw cycles.

Precautions

PRDM14 (aa533-544) Antibody (internal region) is for research use only and not for use in diagnostic or therapeutic procedures.

PRDM14 (aa533-544) Antibody (internal region) - Protein Information

Name PRDM14

Function

Transcription factor that has both positive and negative roles on transcription. Required for the maintenance of embryonic stem cell identity and the reacquisition of pluripotency in somatic cells. May play an essential role in germ cell development at 2 levels: the reacquisition of potential pluripotency, including SOX2 up-regulation, and successful epigenetic reprogramming, characterized by EHMT1 repression. Its association with CBFA2T2 is required for the functions in pluripotency and germ cell formation (By similarity). Directly up- regulates the expression of

pluripotency gene POU5F1 through its proximal enhancer. Binds to the DNA consensus sequence 5'-GGTC[TC]CTAA- 3'.

Cellular Location

Nucleus.

Tissue Location

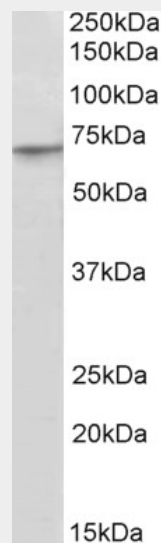
Expressed in embryonic stem cells. Tends to be overexpressed in breast cancer (at protein level)

PRDM14 (aa533-544) Antibody (internal region) - Protocols

Provided below are standard protocols that you may find useful for product applications.

- [Western Blot](#)
- [Blocking Peptides](#)
- [Dot Blot](#)
- [Immunohistochemistry](#)
- [Immunofluorescence](#)
- [Immunoprecipitation](#)
- [Flow Cytometry](#)
- [Cell Culture](#)

PRDM14 (aa533-544) Antibody (internal region) - Images



AF3481a (2 µg/ml) staining of A549 lysate (35 µg protein in RIPA buffer). Primary incubation was 1 hour. Detected by chemiluminescence.

PRDM14 (aa533-544) Antibody (internal region) - References

A genome-wide RNAi screen reveals determinants of human embryonic stem cell identity. Chia NY, Chan YS, Feng B, Lu X, Orlov YL, Moreau D, Kumar P, Yang L, Jiang J, Lau MS, Huss M, Soh BS, Kraus P, Li P, Lufkin T, Lim B, Clarke ND, Bard F, Ng HH, Nature. 2010 Nov 11;468(7321):316-20. PMID: 20953172