

SDF4 (aa161-175) Antibody (internal region)
Peptide-affinity purified goat antibody
Catalog # AF3472a

Specification

SDF4 (aa161-175) Antibody (internal region) - Product Information

Application	WB, IHC, IF, FC
Primary Accession	Q9BRK5
Other Accession	NP_057631.1 , NP_057260.2 , 51150 , 20318 (mouse), 155173 (rat)
Reactivity	Human
Predicted	Mouse, Rat, Dog
Host	Goat
Clonality	Polyclonal
Concentration	0.5 mg/ml
Isotype	IgG
Calculated MW	41807

SDF4 (aa161-175) Antibody (internal region) - Additional Information

Gene ID 51150

Other Names

45 kDa calcium-binding protein, Cab45, Stromal cell-derived factor 4, SDF-4, SDF4, CAB45

Format

0.5 mg/ml in Tris saline, 0.02% sodium azide, pH7.3 with 0.5% bovine serum albumin

Storage

Maintain refrigerated at 2-8°C for up to 6 months. For long term storage store at -20°C in small aliquots to prevent freeze-thaw cycles.

Precautions

SDF4 (aa161-175) Antibody (internal region) is for research use only and not for use in diagnostic or therapeutic procedures.

SDF4 (aa161-175) Antibody (internal region) - Protein Information

Name SDF4

Synonyms CAB45

Function

May regulate calcium-dependent activities in the endoplasmic reticulum lumen or post-ER compartment.

Cellular Location

[Isoform 1]: Golgi apparatus lumen {ECO:0000250|UniProtKB:Q61112}

Tissue Location

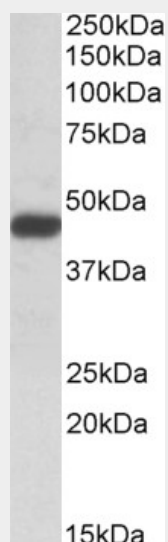
Ubiquitous. Isoform 5 is expressed in pancreas.

SDF4 (aa161-175) Antibody (internal region) - Protocols

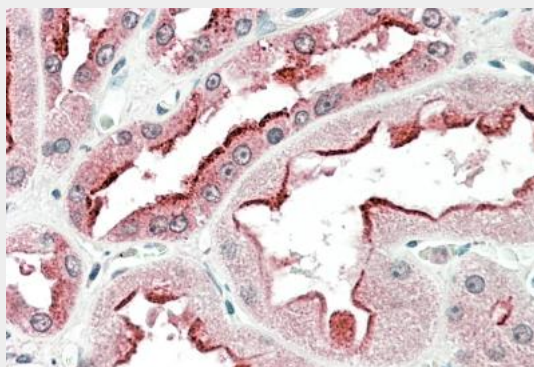
Provided below are standard protocols that you may find useful for product applications.

- [Western Blot](#)
- [Blocking Peptides](#)
- [Dot Blot](#)
- [Immunohistochemistry](#)
- [Immunofluorescence](#)
- [Immunoprecipitation](#)
- [Flow Cytometry](#)
- [Cell Culture](#)

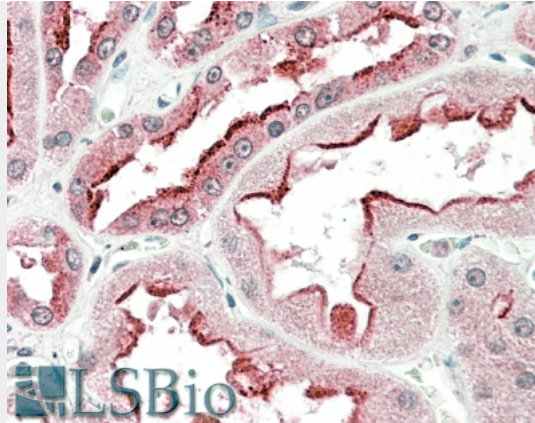
SDF4 (aa161-175) Antibody (internal region) - Images



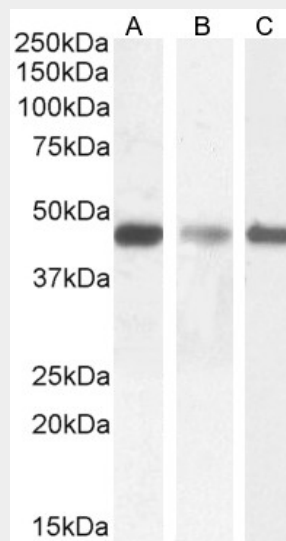
AF3472a (0.1 $\mu\text{g/ml}$) staining of Jurkat lysate (35 μg protein in RIPA buffer). Primary incubation was 1 hour. Detected by chemiluminescence.



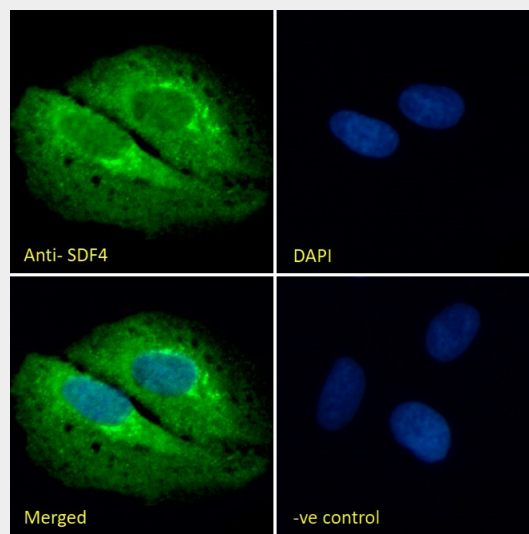
AF3472a (5 $\mu\text{g/ml}$) staining of paraffin embedded Human Kidney. Steamed antigen retrieval with citrate buffer pH 6, AP-staining.



EB10744 (5µg/ml) staining of paraffin embedded Human Kidney. Steamed antigen retrieval with citrate buffer pH 6, AP-staining.

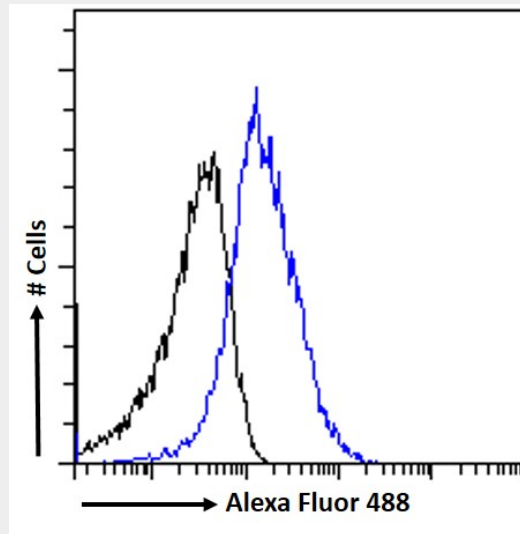


EB10744 (0.1µg/ml) staining of Jurkat (A), HeLa (B) and U251 (C) cell lysate (35µg protein in RIPA buffer). Detected by chemiluminescence.



EB10744 Immunofluorescence analysis of paraformaldehyde fixed U2OS cells, permeabilized with 0.15% Triton. Primary incubation 1hr (10ug/ml) followed by Alexa Fluor 488 secondary antibody (2ug/ml), showing Golgi and cytoplasmic staining. The nuclear stain is DAPI (blue). Negative

control: Unimmunized goat IgG (10ug/ml) followed by Alexa Fluor 488 secondary antibody (2ug/ml).



EB10744 Flow cytometric analysis of paraformaldehyde fixed A431 cells (blue line), permeabilized with 0.5% Triton. Primary incubation 1hr (10ug/ml) followed by Alexa Fluor 488 secondary antibody (1ug/ml). IgG control: Unimmunized goat IgG (black line) followed by Alexa Fluor 488 secondary antibody.

SDF4 (aa161-175) Antibody (internal region) - Background

This antibody is expected to recognize both reported isoforms (NP_057631.1; NP_057260.2).

SDF4 (aa161-175) Antibody (internal region) - References

Transcript analyses of stromal cell derived factors (SDFs): SDF-2, SDF-4 and SDF-5 reveal a different pattern of expression and prognostic association in human breast cancer. Kang H, Escudero-Esparza A, Douglas-Jones A, Mansel RE, Jiang WG, International journal of oncology 2009 Jul 35 (1): 205-11. PMID: 19513569