

CD28 Antibody (internal region)
Peptide-affinity purified goat antibody
Catalog # AF3469a

Specification

CD28 Antibody (internal region) - Product Information

Application	WB
Primary Accession	P10747
Other Accession	NP_006130.1 , 940
Reactivity	Human
Host	Goat
Clonality	Polyclonal
Concentration	0.5 mg/ml
Isotype	IgG
Calculated MW	25066

CD28 Antibody (internal region) - Additional Information

Gene ID 940

Other Names

T-cell-specific surface glycoprotein CD28, TP44, CD28, CD28

Format

0.5 mg/ml in Tris saline, 0.02% sodium azide, pH7.3 with 0.5% bovine serum albumin

Storage

Maintain refrigerated at 2-8°C for up to 6 months. For long term storage store at -20°C in small aliquots to prevent freeze-thaw cycles.

Precautions

CD28 Antibody (internal region) is for research use only and not for use in diagnostic or therapeutic procedures.

CD28 Antibody (internal region) - Protein Information

Name CD28

Function

Receptor that plays a role in T-cell activation, proliferation, survival and the maintenance of immune homeostasis (PubMed: [1650475](http://www.uniprot.org/citations/1650475), PubMed: [7568038](http://www.uniprot.org/citations/7568038)). Functions not only as an amplifier of TCR signals but delivers unique signals that control intracellular biochemical events that alter the gene expression program of T-cells (PubMed: [24665965](http://www.uniprot.org/citations/24665965)). Stimulation upon engagement of its cognate ligands CD80 or CD86 increases proliferation and expression of various cytokines in particular IL2 production in

both CD4(+) and CD8(+) T-cell subsets (PubMed:1650475, PubMed:35397202). Mechanistically, ligation induces recruitment of protein kinase C-theta/PRKCCQ and GRB2 leading to NF-kappa-B activation via both PI3K/Akt-dependent and -independent pathways (PubMed:21964608, PubMed:24665965, PubMed:7568038). In conjunction with TCR/CD3 ligation and CD40L costimulation, enhances the production of IL4 and IL10 in T-cells (PubMed:8617933).

Cellular Location

Cell membrane; Single-pass type I membrane protein

Tissue Location

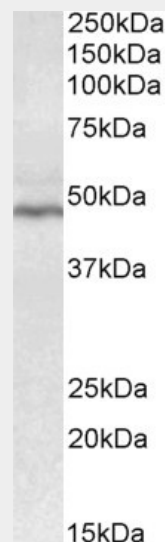
Expressed in T-cells and plasma cells, but not in less mature B-cells

CD28 Antibody (internal region) - Protocols

Provided below are standard protocols that you may find useful for product applications.

- [Western Blot](#)
- [Blocking Peptides](#)
- [Dot Blot](#)
- [Immunohistochemistry](#)
- [Immunofluorescence](#)
- [Immunoprecipitation](#)
- [Flow Cytometry](#)
- [Cell Culture](#)

CD28 Antibody (internal region) - Images



AF3469a (0.3 µg/ml) staining of Human Tonsil lysate (35 µg protein in RIPA buffer). Primary incubation was 1 hour. Detected by chemiluminescence.

CD28 Antibody (internal region) - Background

The immunizing peptide corresponds to a part of the extracellular domain.

CD28 Antibody (internal region) - References

New approach reveals CD28 and IFNG gene interaction in the susceptibility to cervical cancer.
Guzman VB, Yambartsev A, Goncalves-Primo A, Silva ID, Carvalho CR, Ribalta JC, Goulart LR,
Shulzhenko N, Gerbase-Delima M, Morgun A, Human molecular genetics 2008 Jun 17 (12): 1838-44.
PMID: 18337305