

**COL4A3 (aa341-353) Antibody (internal region)**  
Peptide-affinity purified goat antibody  
Catalog # AF3461a

**Specification**

---

**COL4A3 (aa341-353) Antibody (internal region) - Product Information**

Application	IHC
Primary Accession	<a href="#">O01955</a>
Other Accession	<a href="#">NP_000082.2</a> , <a href="#">1285</a>
Reactivity	Human
Predicted	Dog
Host	Goat
Clonality	Polyclonal
Concentration	0.5 mg/ml
Isotype	IgG
Calculated MW	161813

**COL4A3 (aa341-353) Antibody (internal region) - Additional Information**

**Gene ID** 1285

**Other Names**

Collagen alpha-3(IV) chain, Goodpasture antigen, Tumstatin, COL4A3

**Format**

0.5 mg/ml in Tris saline, 0.02% sodium azide, pH7.3 with 0.5% bovine serum albumin

**Storage**

Maintain refrigerated at 2-8°C for up to 6 months. For long term storage store at -20°C in small aliquots to prevent freeze-thaw cycles.

**Precautions**

COL4A3 (aa341-353) Antibody (internal region) is for research use only and not for use in diagnostic or therapeutic procedures.

**COL4A3 (aa341-353) Antibody (internal region) - Protein Information**

**Name** COL4A3

**Function**

Type IV collagen is the major structural component of glomerular basement membranes (GBM), forming a 'chicken-wire' meshwork together with laminins, proteoglycans and entactin/nidogen.

**Cellular Location**

Secreted, extracellular space, extracellular matrix, basement membrane. Note=Colocalizes with COL4A4 and COL4A5 in GBM, tubular basement membrane (TBM) and synaptic basal lamina (BL)

### Tissue Location

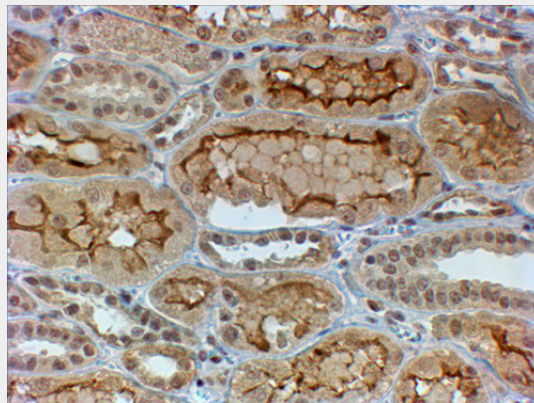
Alpha 3 and alpha 4 type IV collagens are colocalized and present in kidney, eye, basement membranes of lens capsule, cochlea, lung, skeletal muscle, aorta, synaptic fibers, fetal kidney and fetal lung. PubMed:8083201 reports similar levels of expression of alpha 3 and alpha 4 type IV collagens in kidney, but PubMed:7523402 reports that in kidney levels of alpha 3 type IV collagen are significantly lower than those of alpha 4 type IV collagen. According to PubMed:8083201, alpha 3 type IV collagen is not detected in heart, brain, placenta, liver, pancreas, extrasynaptic muscle fibers, endoneurial and perineurial nerves, fetal brain, fetal heart and fetal liver. According to PubMed:7523402, alpha 3 type IV collagen is strongly expressed in pancreas, neuroretina and calvaria and not expressed in adrenal, ileum and skin. Isoform 1 and isoform 3 are strongly expressed in kidney, lung, suprarenal capsule, muscle and spleen, in each of these tissues isoform 1 is more abundant than isoform 3. Isoform 1 and isoform 3 are expressed at low levels in artery, fat, pericardium and peripheral nerve, but not in placenta, mesangium, skin, pleura and cultured umbilical endothelial cells

### COL4A3 (aa341-353) Antibody (internal region) - Protocols

Provided below are standard protocols that you may find useful for product applications.

- [Western Blot](#)
- [Blocking Peptides](#)
- [Dot Blot](#)
- [Immunohistochemistry](#)
- [Immunofluorescence](#)
- [Immunoprecipitation](#)
- [Flow Cytometry](#)
- [Cell Culture](#)

### COL4A3 (aa341-353) Antibody (internal region) - Images



AF3461a (4 µg/ml) staining of paraffin embedded Human Kidney. Steamed antigen retrieval with citrate buffer pH 6, HRP-staining.

### COL4A3 (aa341-353) Antibody (internal region) - References

A genetic association study of maternal and fetal candidate genes that predispose to preterm prelabor rupture of membranes (PROM). Romero R, Friel LA, Velez Edwards DR, Kusanovic JP, Hassan SS, Mazaki-Tovi S, Vaisbuch E, Kim CJ, Erez O, Chaiworapongsa T, Pearce BD, Bartlett J, Salisbury BA, Anant MK, Vovis GF, Lee MS, Gomez R, Behnke E, Oyarzun E, Tromp G, Williams SM, Menon R, American journal of obstetrics and gynecology 2010 Oct 203 (4): 361.e1-361.e30. PMID: 20673868