

IRF2BP1 (aa461-474) Antibody (internal region)
Peptide-affinity purified goat antibody
Catalog # AF3456a

Specification

IRF2BP1 (aa461-474) Antibody (internal region) - Product Information

Application	WB
Primary Accession	Q8IU81
Other Accession	NP_056464.1 , 26145
Reactivity	Human, Mouse, Rat
Predicted	Pig, Dog
Host	Goat
Clonality	Polyclonal
Concentration	0.5 mg/ml
Isotype	IgG
Calculated MW	61688

IRF2BP1 (aa461-474) Antibody (internal region) - Additional Information

Gene ID 26145

Other Names

Interferon regulatory factor 2-binding protein 1, IRF-2-binding protein 1, IRF-2BP1, Probable E3 ubiquitin-protein ligase IRF2BP1, 6.3.2.-, IRF2BP1

Format

0.5 mg/ml in Tris saline, 0.02% sodium azide, pH7.3 with 0.5% bovine serum albumin

Storage

Maintain refrigerated at 2-8°C for up to 6 months. For long term storage store at -20°C in small aliquots to prevent freeze-thaw cycles.

Precautions

IRF2BP1 (aa461-474) Antibody (internal region) is for research use only and not for use in diagnostic or therapeutic procedures.

IRF2BP1 (aa461-474) Antibody (internal region) - Protein Information

Name IRF2BP1

Function

Acts as a transcriptional corepressor in a IRF2-dependent manner; this repression is not mediated by histone deacetylase activities. May act as an E3 ligase towards JDP2, enhancing its polyubiquitination. Represses ATF2-dependent transcriptional activation.

Cellular Location

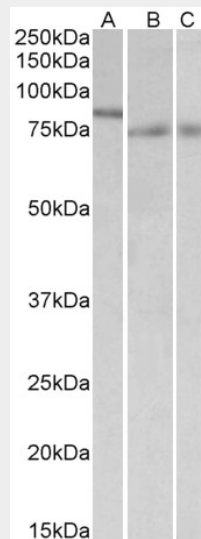
Nucleus.

IRF2BP1 (aa461-474) Antibody (internal region) - Protocols

Provided below are standard protocols that you may find useful for product applications.

- [Western Blot](#)
- [Blocking Peptides](#)
- [Dot Blot](#)
- [Immunohistochemistry](#)
- [Immunofluorescence](#)
- [Immunoprecipitation](#)
- [Flow Cytometry](#)
- [Cell Culture](#)

IRF2BP1 (aa461-474) Antibody (internal region) - Images



AF3456a (1 $\mu\text{g/ml}$) staining of nuclear NIH3T3 lysate (A) and of Mouse (B) and Rat (C) Colon lysates (35 μg protein in RIPA buffer). Primary incubation was 1 hour. Detected by chemiluminescence.



AF3456a (0.5 $\mu\text{g/ml}$) staining of Human Liver lysate (35 μg protein in RIPA buffer). Primary

incubation was 1 hour. Detected by chemiluminescence.

IRF2BP1 (aa461-474) Antibody (internal region) - References

IRF2-binding protein-1 is a JDP2 ubiquitin ligase and an inhibitor of ATF2-dependent transcription.
Kimura M, FEBS letters 2008 Aug 582 (19): 2833-7. PMID: 18671972