

Calcipressin-1 Antibody (internal region)
Peptide-affinity purified goat antibody
Catalog # AF3452a

Specification

Calcipressin-1 Antibody (internal region) - Product Information

Application	WB
Primary Accession	P53805
Other Accession	NP_004405.3 , NP_981962.1 , NP_981963.1 , 1827 , 54720 (mouse) , 266766 (rat)
Reactivity	Mouse
Predicted	Human, Rat, Dog
Host	Goat
Clonality	Polyclonal
Concentration	0.5 mg/ml
Isotype	IgG
Calculated MW	28079

Calcipressin-1 Antibody (internal region) - Additional Information

Gene ID 1827

Other Names

Calcipressin-1, Adapt78, Down syndrome critical region protein 1, Myocyte-enriched calcineurin-interacting protein 1, MCIP1, Regulator of calcineurin 1, RCAN1, ADAPT78, CSP1, DSC1, DSCR1

Format

0.5 mg/ml in Tris saline, 0.02% sodium azide, pH7.3 with 0.5% bovine serum albumin

Storage

Maintain refrigerated at 2-8°C for up to 6 months. For long term storage store at -20°C in small aliquots to prevent freeze-thaw cycles.

Precautions

Calcipressin-1 Antibody (internal region) is for research use only and not for use in diagnostic or therapeutic procedures.

Calcipressin-1 Antibody (internal region) - Protein Information

Name RCAN1

Synonyms ADAPT78, CSP1, DSC1, DSCR1

Function

Inhibits calcineurin-dependent transcriptional responses by binding to the catalytic domain of calcineurin A (PubMed:

target="_blank">12809556). Could play a role during central nervous system development (By similarity).

Tissue Location

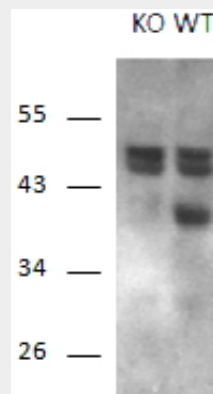
Highly expressed heart, brain and skeletal muscle. Also expressed in all other tissues

Calcipressin-1 Antibody (internal region) - Protocols

Provided below are standard protocols that you may find useful for product applications.

- [Western Blot](#)
- [Blocking Peptides](#)
- [Dot Blot](#)
- [Immunohistochemistry](#)
- [Immunofluorescence](#)
- [Immunoprecipitation](#)
- [Flow Cytometry](#)
- [Cell Culture](#)

Calcipressin-1 Antibody (internal region) - Images



AF3452a (1 µg/ml) staining of Mouse Brain and KO Mouse Brain lysates (35 µg protein in RIPA buffer). Primary incubation was 1 hour. Detected by chemiluminescence.

Calcipressin-1 Antibody (internal region) - Background

This antibody is expected to recognize all three reported isoforms (NP_004405.3; NP_981962.1; NP_981963.1).

Calcipressin-1 Antibody (internal region) - References

Integrative genomics identifies DSCR1 (RCAN1) as a novel NFAT-dependent mediator of phenotypic modulation in vascular smooth muscle cells. Lee MY, Garvey SM, Baras AS, Lemmon JA, Gomez MF, Schoppee Bortz PD, Daum G, LeBoeuf RC, Wamhoff BR, Human molecular genetics 2010 Feb 19 (3): 468-79. PMID: 19926569