

Endophilin-A2 Antibody (internal region)
Peptide-affinity purified goat antibody
Catalog # AF3451a**Specification**

Endophilin-A2 Antibody (internal region) - Product Information

Application	WB
Primary Accession	Q99961
Other Accession	NP_003016.1 , 6455
Reactivity	Human
Predicted	Dog
Host	Goat
Clonality	Polyclonal
Concentration	0.5 mg/ml
Isotype	IgG
Calculated MW	41490

Endophilin-A2 Antibody (internal region) - Additional Information

Gene ID 6455

Other Names

Endophilin-A2, EEN fusion partner of MLL, Endophilin-2, Extra eleven-nineteen leukemia fusion gene protein, EEN, SH3 domain protein 2B, SH3 domain-containing GRB2-like protein 1, SH3GL1, CNSA1, SH3D2B

Format

0.5 mg/ml in Tris saline, 0.02% sodium azide, pH7.3 with 0.5% bovine serum albumin

Storage

Maintain refrigerated at 2-8°C for up to 6 months. For long term storage store at -20°C in small aliquots to prevent freeze-thaw cycles.

Precautions

Endophilin-A2 Antibody (internal region) is for research use only and not for use in diagnostic or therapeutic procedures.

Endophilin-A2 Antibody (internal region) - Protein Information

Name SH3GL1

Synonyms CNSA1, SH3D2B

Function

Implicated in endocytosis. May recruit other proteins to membranes with high curvature (By similarity).

Cellular Location

Cytoplasm. Early endosome membrane; Peripheral membrane protein. Cell projection, podosome.
Note=Associated with postsynaptic endosomes in hippocampal neurons.

Tissue Location

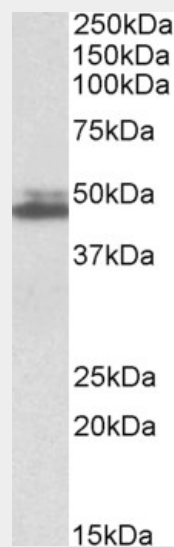
Ubiquitous. Higher expression in pancreas, placenta, prostate, testis and uterus

Endophilin-A2 Antibody (internal region) - Protocols

Provided below are standard protocols that you may find useful for product applications.

- [Western Blot](#)
- [Blocking Peptides](#)
- [Dot Blot](#)
- [Immunohistochemistry](#)
- [Immunofluorescence](#)
- [Immunoprecipitation](#)
- [Flow Cytometry](#)
- [Cell Culture](#)

Endophilin-A2 Antibody (internal region) - Images



AF3451a (0.3 µg/ml) staining of K562 lysate (35 µg protein in RIPA buffer). Primary incubation was 1 hour. Detected by chemiluminescence.

Endophilin-A2 Antibody (internal region) - References

Activation of EGF receptor endocytosis and ERK1/2 signaling by BPGAP1 requires direct interaction with EEN/endophilin II and a functional RhoGAP domain. Lua BL, Low BC, Journal of cell science 2005 Jun 118 (Pt 12): 2707-21. PMID: 15944398