

**p47phox (mouse) Antibody (internal region)**  
Peptide-affinity purified goat antibody  
Catalog # AF3417a

### Specification

---

#### p47phox (mouse) Antibody (internal region) - Product Information

Application	WB
Primary Accession	<a href="#">P14598</a>
Other Accession	<a href="#">NP_035006.3</a> , <a href="#">653361</a> , <a href="#">17969 (mouse)</a> , <a href="#">114553 (rat)</a>
Reactivity	Mouse
Predicted	Human, Rat, Pig, Dog
Host	Goat
Clonality	Polyclonal
Concentration	0.5 mg/ml
Isotype	IgG
Calculated MW	44682

#### p47phox (mouse) Antibody (internal region) - Additional Information

Gene ID [653361](#)

#### Other Names

Neutrophil cytosol factor 1, NCF-1, 47 kDa autosomal chronic granulomatous disease protein, 47 kDa neutrophil oxidase factor, NCF-47K, Neutrophil NADPH oxidase factor 1, Nox organizer 2, Nox-organizing protein 2, SH3 and PX domain-containing protein 1A, p47-phox, NCF1, NOXO2, SH3PXD1A

#### Format

0.5 mg/ml in Tris saline, 0.02% sodium azide, pH7.3 with 0.5% bovine serum albumin

#### Storage

Maintain refrigerated at 2-8°C for up to 6 months. For long term storage store at -20°C in small aliquots to prevent freeze-thaw cycles.

#### Precautions

p47phox (mouse) Antibody (internal region) is for research use only and not for use in diagnostic or therapeutic procedures.

#### p47phox (mouse) Antibody (internal region) - Protein Information

Name NCF1

Synonyms NOXO2, SH3PXD1A

#### Function

NCF2, NCF1, and a membrane bound cytochrome b558 are required for activation of the latent

NADPH oxidase (necessary for superoxide production).

**Cellular Location**

Cytoplasm, cytosol. Membrane; Peripheral membrane protein; Cytoplasmic side

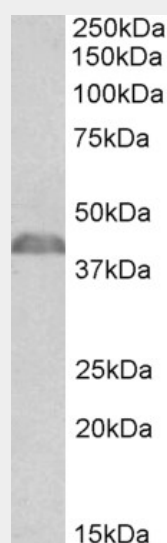
**Tissue Location**

Detected in peripheral blood monocytes and neutrophils (at protein level).

**p47phox (mouse) Antibody (internal region) - Protocols**

Provided below are standard protocols that you may find useful for product applications.

- [Western Blot](#)
- [Blocking Peptides](#)
- [Dot Blot](#)
- [Immunohistochemistry](#)
- [Immunofluorescence](#)
- [Immunoprecipitation](#)
- [Flow Cytometry](#)
- [Cell Culture](#)

**p47phox (mouse) Antibody (internal region) - Images**

AF3417a (0.03 µg/ml) staining of Mouse Thymus lysate (35 µg protein in RIPA buffer). Primary incubation was 1 hour. Detected by chemiluminescence.

**p47phox (mouse) Antibody (internal region) - References**

Hematologically important mutations: the autosomal recessive forms of chronic granulomatous disease (second update). Roos D, Kuhns DB, Maddalena A, Bustamante J, Kannengiesser C, de Boer M, van Leeuwen K, Kalkbrenner MY, Wolach B, Roesler J, Malech HL, Holland SM, Gallin JI, Stasia MJ, Blood cells, molecules & diseases 2010 Apr 44 (4): 291-9. PMID: 20167518