

SIM2 Antibody (internal region)
Peptide-affinity purified goat antibody
Catalog # AF3411a

Specification

SIM2 Antibody (internal region) - Product Information

| | |
|-------------------|---|
| Application | WB |
| Primary Accession | Q14190 |
| Other Accession | NP_005060.1 , NP_033664.2 , 6493 , 20465 (mouse), 304071 (rat) |
| Reactivity | Mouse |
| Predicted | Human, Rat |
| Host | Goat |
| Clonality | Polyclonal |
| Concentration | 0.5 mg/ml |
| Isotype | IgG |
| Calculated MW | 73219 |

SIM2 Antibody (internal region) - Additional Information

Gene ID 6493

Other Names

Single-minded homolog 2, Class E basic helix-loop-helix protein 15, bHLHe15, SIM2, BHLHE15

Format

0.5 mg/ml in Tris saline, 0.02% sodium azide, pH7.3 with 0.5% bovine serum albumin

Storage

Maintain refrigerated at 2-8°C for up to 6 months. For long term storage store at -20°C in small aliquots to prevent freeze-thaw cycles.

Precautions

SIM2 Antibody (internal region) is for research use only and not for use in diagnostic or therapeutic procedures.

SIM2 Antibody (internal region) - Protein Information

Name SIM2

Synonyms BHLHE15

Function

Transcription factor that may be a master gene of CNS development in cooperation with Arnt. It may have pleiotropic effects in the tissues expressed during development.

Cellular Location

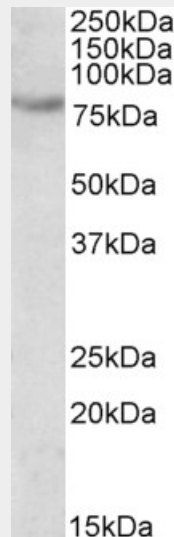
Nucleus {ECO:0000255|PROSITE-ProRule:PRU00632, ECO:0000255|PROSITE-ProRule:PRU00981, ECO:0000269|PubMed:14697214}

SIM2 Antibody (internal region) - Protocols

Provided below are standard protocols that you may find useful for product applications.

- [Western Blot](#)
- [Blocking Peptides](#)
- [Dot Blot](#)
- [Immunohistochemistry](#)
- [Immunofluorescence](#)
- [Immunoprecipitation](#)
- [Flow Cytometry](#)
- [Cell Culture](#)

SIM2 Antibody (internal region) - Images



AF3411a (0.5 µg/ml) staining of fetal Mouse kidney lysate (35 µg protein in RIPA buffer). Primary incubation was 1 hour. Detected by chemiluminescence.

SIM2 Antibody (internal region) - Background

This antibody is expected to recognize all reported isoforms (NP_005060.1; NP_033664.2).

SIM2 Antibody (internal region) - References

[Association study of SIM2 gene polymorphisms with susceptibility to congenital scoliosis in a Chinese Han population] Fei Q, Wu ZH, Zhou X, Wang H, Wang NG, Yin RF, Wang YP, Qiu GX, Zhonghua yi xue za zhi 2009 Nov 89 (41): 2888-93. PMID: 20137643