

**IDH2 Antibody (internal region)**  
Peptide-affinity purified goat antibody  
Catalog # AF3397a

**Specification**

---

**IDH2 Antibody (internal region) - Product Information**

Application	WB
Primary Accession	<a href="#">P48735</a>
Other Accession	<a href="#">NP_002159.2</a> , <a href="#">3418</a> , <a href="#">269951 (mouse)</a> , <a href="#">361596 (rat)</a>
Reactivity	Human, Mouse, Rat
Predicted	Pig, Dog
Host	Goat
Clonality	Polyclonal
Concentration	0.5 mg/ml
Isotype	IgG
Calculated MW	50909

**IDH2 Antibody (internal region) - Additional Information**

**Gene ID** 3418

**Other Names**

Isocitrate dehydrogenase [NADP], mitochondrial, IDH, 1.1.1.42, ICD-M, IDP, NADP(+)-specific ICDH, Oxalosuccinate decarboxylase, IDH2

**Format**

0.5 mg/ml in Tris saline, 0.02% sodium azide, pH7.3 with 0.5% bovine serum albumin

**Storage**

Maintain refrigerated at 2-8°C for up to 6 months. For long term storage store at -20°C in small aliquots to prevent freeze-thaw cycles.

**Precautions**

IDH2 Antibody (internal region) is for research use only and not for use in diagnostic or therapeutic procedures.

**IDH2 Antibody (internal region) - Protein Information**

**Name** IDH2

**Function**

Plays a role in intermediary metabolism and energy production (PubMed:[19228619](http://www.uniprot.org/citations/19228619)), PubMed:[22416140](http://www.uniprot.org/citations/22416140)). It may tightly associate or interact with the pyruvate dehydrogenase complex (PubMed:[19228619](http://www.uniprot.org/citations/19228619)), PubMed:[19228619](http://www.uniprot.org/citations/19228619)).

href="http://www.uniprot.org/citations/22416140" target="\_blank">22416140</a>).

#### Cellular Location

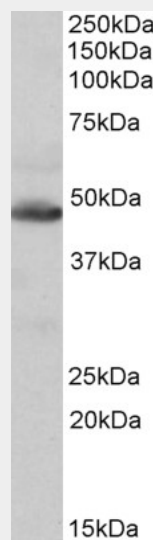
Mitochondrion {ECO:0000250|UniProtKB:P33198}.

#### IDH2 Antibody (internal region) - Protocols

Provided below are standard protocols that you may find useful for product applications.

- [Western Blot](#)
- [Blocking Peptides](#)
- [Dot Blot](#)
- [Immunohistochemistry](#)
- [Immunofluorescence](#)
- [Immunoprecipitation](#)
- [Flow Cytometry](#)
- [Cell Culture](#)

#### IDH2 Antibody (internal region) - Images



AF3397a (0.1 µg/ml) staining of Human Heart lysate (35 µg protein in RIPA buffer). Primary incubation was 1 hour. Detected by chemiluminescence.

#### IDH2 Antibody (internal region) - References

Acquired mutations in the genes encoding IDH1 and IDH2 both are recurrent aberrations in acute myeloid leukemia (AML): prevalence and prognostic value. Abbas S, Lugthart S, Kavelaars FG, Schelen A, Koenders J, Zeilemaker A, van Putten WJ, Rijneveld A, Löwenberg B, Valk PJ. Blood. 2010 Jun 10. PMID: 20538800