

**RSPO3 Antibody (internal region)**  
**Peptide-affinity purified goat antibody**  
**Catalog # AF3389a****Specification**

---

**RSPO3 Antibody (internal region) - Product Information**

Application	WB
Primary Accession	<a href="#">Q9BXY4</a>
Other Accession	<a href="#">NP_116173.2</a> , <a href="#">84870</a> , <a href="#">72780 (mouse)</a> , <a href="#">498997 (rat)</a>
Reactivity	Human
Predicted	Mouse, Rat, Dog
Host	Goat
Clonality	Polyclonal
Concentration	0.5 mg/ml
Isotype	IgG
Calculated MW	30929

**RSPO3 Antibody (internal region) - Additional Information****Gene ID** 84870**Other Names**

R-spondin-3, Protein with TSP type-1 repeat, hPWTSR, Roof plate-specific spondin-3, hRspo3, Thrombospondin type-1 domain-containing protein 2, RSPO3, PWTSR, THSD2

**Format**

0.5 mg/ml in Tris saline, 0.02% sodium azide, pH7.3 with 0.5% bovine serum albumin

**Storage**

Maintain refrigerated at 2-8°C for up to 6 months. For long term storage store at -20°C in small aliquots to prevent freeze-thaw cycles.

**Precautions**

RSPO3 Antibody (internal region) is for research use only and not for use in diagnostic or therapeutic procedures.

**RSPO3 Antibody (internal region) - Protein Information****Name** RSPO3**Synonyms** PWTSR, THSD2**Function**

Activator of the canonical Wnt signaling pathway by acting as a ligand for LGR4-6 receptors, which acts as a key regulator of angiogenesis. Upon binding to LGR4-6 (LGR4, LGR5 or LGR6), LGR4-6 associate with phosphorylated LRP6 and frizzled receptors that are activated by extracellular Wnt

receptors, triggering the canonical Wnt signaling pathway to increase expression of target genes. Also regulates the canonical Wnt/beta-catenin-dependent pathway and non- canonical Wnt signaling by acting as an inhibitor of ZNRF3, an important regulator of the Wnt signaling pathway. Acts as a ligand for frizzled FZD8 and LRP6. May negatively regulate the TGF-beta pathway (PubMed:<a href="http://www.uniprot.org/citations/21727895" target="\_blank">21727895</a>, PubMed:<a href="http://www.uniprot.org/citations/21909076" target="\_blank">21909076</a>, PubMed:<a href="http://www.uniprot.org/citations/22615920" target="\_blank">22615920</a>). Acts as a key regulator of angiogenesis by controlling vascular stability and pruning: acts by activating the non-canonical Wnt signaling pathway in endothelial cells (By similarity) (PubMed:<a href="http://www.uniprot.org/citations/21727895" target="\_blank">21727895</a>, PubMed:<a href="http://www.uniprot.org/citations/21909076" target="\_blank">21909076</a>, PubMed:<a href="http://www.uniprot.org/citations/22615920" target="\_blank">22615920</a>). Can also amplify Wnt signaling pathway independently of LGR4-6 receptors, possibly by acting as a direct antagonistic ligand to RNF43 and ZNRF3 (PubMed:<a href="http://www.uniprot.org/citations/29769720" target="\_blank">29769720</a>).

#### **Cellular Location**

Secreted {ECO:0000250|UniProtKB:Q2TJ95}.

#### **Tissue Location**

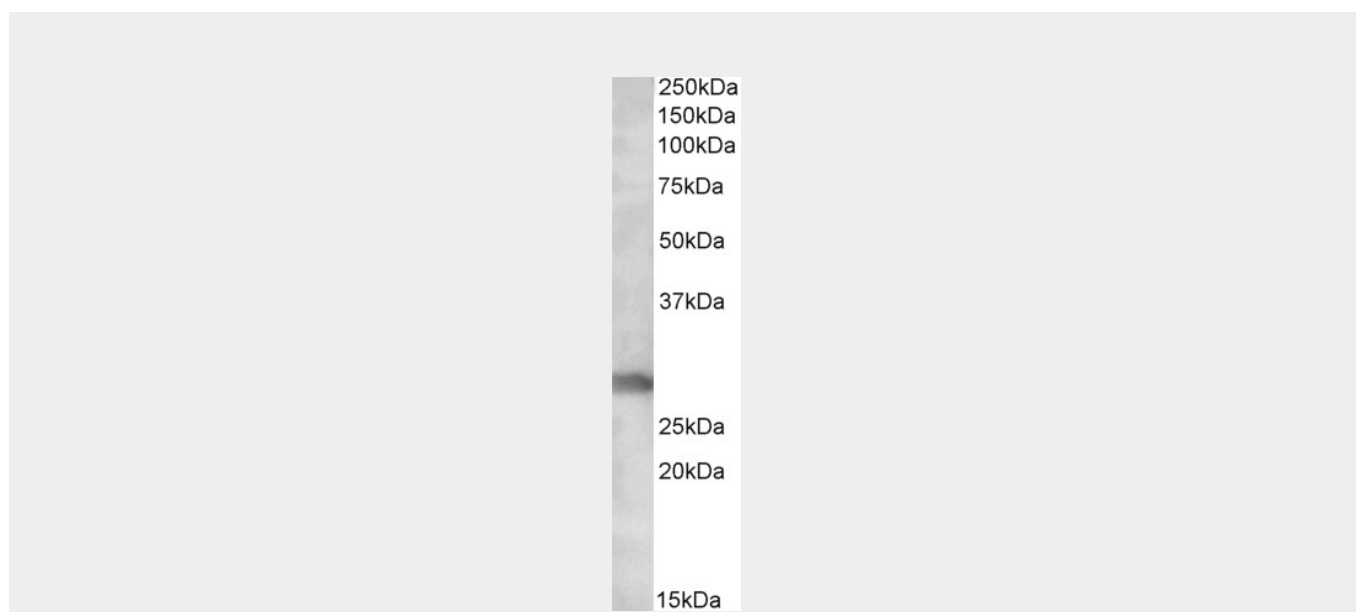
Ubiquitously expressed. Expressed at higher level in placenta, small intestine, fetal thymus and lymph node (PubMed:12463421). Highly expressed in endothelial cells (PubMed:26766444).

### **RSPO3 Antibody (internal region) - Protocols**

Provided below are standard protocols that you may find useful for product applications.

- [Western Blot](#)
- [Blocking Peptides](#)
- [Dot Blot](#)
- [Immunohistochemistry](#)
- [Immunofluorescence](#)
- [Immunoprecipitation](#)
- [Flow Cytometry](#)
- [Cell Culture](#)

### **RSPO3 Antibody (internal region) - Images**



AF3389a (0.3 µg/ml) staining of Human Skeletal Muscle lysate (35 µg protein in RIPA buffer). Primary incubation was 1 hour. Detected by chemiluminescence.

**RSPO3 Antibody (internal region) - References**

Personalized smoking cessation: interactions between nicotine dose, dependence and quit success genotype score. Rose J, Behm FM, Drgon T, Johnson C, Uhl GR, Molecular medicine (Cambridge, Mass.) 2010 Mar : . PMID: 20379614