

**PCBP1 (aa234-247) Antibody (internal region)**  
Peptide-affinity purified goat antibody  
Catalog # AF3384a

### Specification

---

#### PCBP1 (aa234-247) Antibody (internal region) - Product Information

Application	WB
Primary Accession	<a href="#">Q15365</a>
Other Accession	<a href="#">CAA55016.1</a> , <a href="#">5093</a> , <a href="#">23983 (mouse)</a> , <a href="#">500242 (rat)</a>
Reactivity	Human
Predicted	Mouse, Rat, Pig, Dog
Host	Goat
Clonality	Polyclonal
Concentration	0.5 mg/ml
Isotype	IgG
Calculated MW	37498

#### PCBP1 (aa234-247) Antibody (internal region) - Additional Information

Gene ID 5093

#### Other Names

Poly(rC)-binding protein 1, Alpha-CP1, Heterogeneous nuclear ribonucleoprotein E1, hnRNP E1, Nucleic acid-binding protein SUB2.3, PCBP1

#### Format

0.5 mg/ml in Tris saline, 0.02% sodium azide, pH7.3 with 0.5% bovine serum albumin

#### Storage

Maintain refrigerated at 2-8°C for up to 6 months. For long term storage store at -20°C in small aliquots to prevent freeze-thaw cycles.

#### Precautions

PCBP1 (aa234-247) Antibody (internal region) is for research use only and not for use in diagnostic or therapeutic procedures.

#### PCBP1 (aa234-247) Antibody (internal region) - Protein Information

**Name** PCBP1 {ECO:0000303|PubMed:7607214, ECO:0000312|HGNC:HGNC:8647}

#### Function

Single-stranded nucleic acid binding protein that binds preferentially to oligo dC (PubMed:<a href="http://www.uniprot.org/citations/15731341" target="\_blank">15731341</a>, PubMed:<a href="http://www.uniprot.org/citations/7556077" target="\_blank">7556077</a>, PubMed:<a href="http://www.uniprot.org/citations/7607214" target="\_blank">7607214</a>, PubMed:<a href="http://www.uniprot.org/citations/8152927" target="\_blank">8152927</a>). Together with

PCBP2, required for erythropoiesis, possibly by regulating mRNA splicing (By similarity).

#### Cellular Location

Nucleus. Cytoplasm. Note=Loosely bound in the nucleus (PubMed:7607214). May shuttle between the nucleus and the cytoplasm (PubMed:7607214).

#### Tissue Location

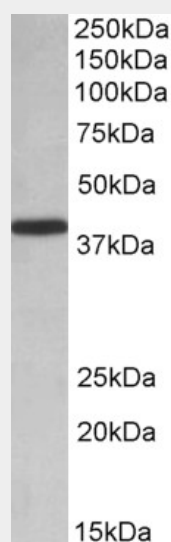
Abundantly expressed in skeletal muscle, thymus and peripheral blood leukocytes while a lower expression is observed in prostate, spleen, testis, ovary, small intestine, heart, liver, adrenal and thyroid glands.

### PCBP1 (aa234-247) Antibody (internal region) - Protocols

Provided below are standard protocols that you may find useful for product applications.

- [Western Blot](#)
- [Blocking Peptides](#)
- [Dot Blot](#)
- [Immunohistochemistry](#)
- [Immunofluorescence](#)
- [Immunoprecipitation](#)
- [Flow Cytometry](#)
- [Cell Culture](#)

### PCBP1 (aa234-247) Antibody (internal region) - Images



AF3384a (0.01  $\mu$ g/ml) staining of HeLa lysate (35  $\mu$ g protein in RIPA buffer). Primary incubation was 1 hour. Detected by chemiluminescence.

### PCBP1 (aa234-247) Antibody (internal region) - References

Depletion of the poly(C)-binding proteins alphaCP1 and alphaCP2 from K562 cells leads to p53-independent induction of cyclin-dependent kinase inhibitor (CDKN1A) and G1 arrest. Waggoner SA, Johannes GJ, Liebhaber SA, The Journal of biological chemistry 2009 Apr 284 (14): 9039-49. PMID: 19211566