

PCBP1 (aa223-234) Antibody (internal region)
Peptide-affinity purified goat antibody
Catalog # AF3383a

Specification

PCBP1 (aa223-234) Antibody (internal region) - Product Information

Application	WB
Primary Accession	Q15365
Other Accession	NP_006187.2 , 5093 , 23983 (mouse) , 500242 (rat)
Reactivity	Human, Rat
Predicted	Mouse, Dog
Host	Goat
Clonality	Polyclonal
Concentration	0.5 mg/ml
Isotype	IgG
Calculated MW	37498

PCBP1 (aa223-234) Antibody (internal region) - Additional Information

Gene ID 5093

Other Names

Poly(rC)-binding protein 1, Alpha-CP1, Heterogeneous nuclear ribonucleoprotein E1, hnRNP E1, Nucleic acid-binding protein SUB2.3, PCBP1

Format

0.5 mg/ml in Tris saline, 0.02% sodium azide, pH7.3 with 0.5% bovine serum albumin

Storage

Maintain refrigerated at 2-8°C for up to 6 months. For long term storage store at -20°C in small aliquots to prevent freeze-thaw cycles.

Precautions

PCBP1 (aa223-234) Antibody (internal region) is for research use only and not for use in diagnostic or therapeutic procedures.

PCBP1 (aa223-234) Antibody (internal region) - Protein Information

Name PCBP1 {ECO:0000303|PubMed:7607214, ECO:0000312|HGNC:HGNC:8647}

Function

Single-stranded nucleic acid binding protein that binds preferentially to oligo dC (PubMed:15731341, PubMed:7556077, PubMed:7607214, PubMed:8152927). Together with

PCBP2, required for erythropoiesis, possibly by regulating mRNA splicing (By similarity).

Cellular Location

Nucleus. Cytoplasm. Note=Loosely bound in the nucleus (PubMed:7607214). May shuttle between the nucleus and the cytoplasm (PubMed:7607214).

Tissue Location

Abundantly expressed in skeletal muscle, thymus and peripheral blood leukocytes while a lower expression is observed in prostate, spleen, testis, ovary, small intestine, heart, liver, adrenal and thyroid glands.

PCBP1 (aa223-234) Antibody (internal region) - Protocols

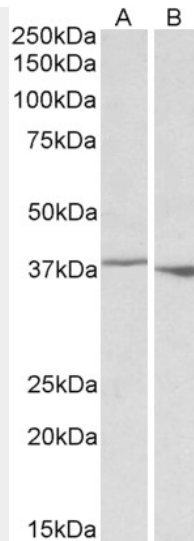
Provided below are standard protocols that you may find useful for product applications.

- [Western Blot](#)
- [Blocking Peptides](#)
- [Dot Blot](#)
- [Immunohistochemistry](#)
- [Immunofluorescence](#)
- [Immunoprecipitation](#)
- [Flow Cytometry](#)
- [Cell Culture](#)

PCBP1 (aa223-234) Antibody (internal region) - Images



AF3383a (0.1 µg/ml) staining of PBMC lysate (35 µg protein in RIPA buffer). Primary incubation was 1 hour. Detected by chemiluminescence.



AF3383a (0.1 $\mu\text{g/ml}$) staining of Rat Spleen (A) and Thymus (B) lysate (35 μg protein in RIPA buffer). Primary incubation was 1 hour. Detected by chemiluminescence.

PCBP1 (aa223-234) Antibody (internal region) - References

Depletion of the poly(C)-binding proteins alphaCP1 and alphaCP2 from K562 cells leads to p53-independent induction of cyclin-dependent kinase inhibitor (CDKN1A) and G1 arrest. Waggoner SA, Johannes GJ, Liebhaber SA, The Journal of biological chemistry 2009 Apr 284 (14): 9039-49. PMID: 19211566