

**ALDH5A1 (aa 485-496) Antibody (internal region)**  
Peptide-affinity purified goat antibody  
Catalog # AF3359a

**Specification**

---

**ALDH5A1 (aa 485-496) Antibody (internal region) - Product Information**

Application	WB, IHC
Primary Accession	<a href="#">P51649</a>
Other Accession	<a href="#">NP_733936.1</a> , <a href="#">NP_001071.1</a> , <a href="#">7915</a> , <a href="#">214579</a> (mouse), <a href="#">291133</a> (rat)
Reactivity	Human, Mouse, Rat
Predicted	Dog
Host	Goat
Clonality	Polyclonal
Concentration	0.5 mg/ml
Isotype	IgG
Calculated MW	57215

**ALDH5A1 (aa 485-496) Antibody (internal region) - Additional Information**

Gene ID 7915

**Other Names**

Succinate-semialdehyde dehydrogenase, mitochondrial, 1.2.1.24, Aldehyde dehydrogenase family 5 member A1, NAD(+)-dependent succinic semialdehyde dehydrogenase, ALDH5A1, SSADH

**Format**

0.5 mg/ml in Tris saline, 0.02% sodium azide, pH7.3 with 0.5% bovine serum albumin

**Storage**

Maintain refrigerated at 2-8°C for up to 6 months. For long term storage store at -20°C in small aliquots to prevent freeze-thaw cycles.

**Precautions**

ALDH5A1 (aa 485-496) Antibody (internal region) is for research use only and not for use in diagnostic or therapeutic procedures.

**ALDH5A1 (aa 485-496) Antibody (internal region) - Protein Information**

Name ALDH5A1 ([HGNC:408](#))

Synonyms SSADH

**Function**

Catalyzes one step in the degradation of the inhibitory neurotransmitter gamma-aminobutyric acid (GABA).

**Cellular Location**

Mitochondrion.

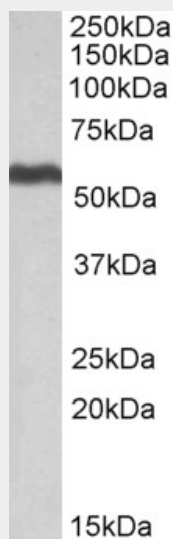
**Tissue Location**

Brain, pancreas, heart, liver, skeletal muscle and kidney. Lower in placenta

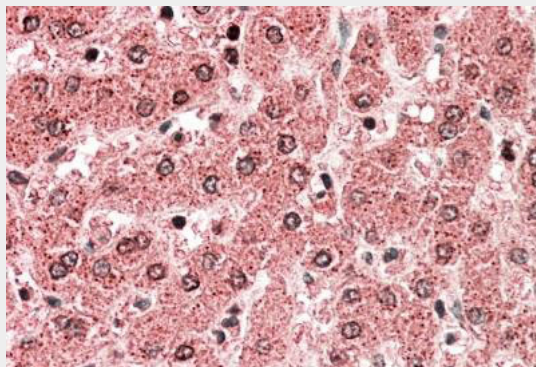
**ALDH5A1 (aa 485-496) Antibody (internal region) - Protocols**

Provided below are standard protocols that you may find useful for product applications.

- [Western Blot](#)
- [Blocking Peptides](#)
- [Dot Blot](#)
- [Immunohistochemistry](#)
- [Immunofluorescence](#)
- [Immunoprecipitation](#)
- [Flow Cytometry](#)
- [Cell Culture](#)

**ALDH5A1 (aa 485-496) Antibody (internal region) - Images**

AF3359a (0.5 µg/ml) staining of Human Liver lysate (35 µg protein in RIPA buffer). Primary incubation was 1 hour. Detected by chemiluminescence.



AF3359a (5 µg/ml) staining of paraffin embedded Human Liver. Steamed antigen retrieval with

citrate buffer pH 6, AP-staining.

#### **ALDH5A1 (aa 485-496) Antibody (internal region) - Background**

This antibody is expected to recognize both reported isoforms (NP\_733936.1; NP\_001071.1). Amino acid numbering in name calculated from NP\_733936.1.

#### **ALDH5A1 (aa 485-496) Antibody (internal region) - References**

Human variation in alcohol response is influenced by variation in neuronal signaling genes. Joslyn G, Ravindranathan A, Brush G, Schuckit M, White RL, Alcoholism, clinical and experimental research 2010 May 34 (5): 800-12. PMID: 20201926