

PSMB9 Antibody (internal region)
Peptide-affinity purified goat antibody
Catalog # AF3336a

Specification

PSMB9 Antibody (internal region) - Product Information

Application	WB
Primary Accession	P28065
Other Accession	NP_002791.1 , 5698 , 16912 (mouse) , 24967 (rat)
Reactivity	Human, Rat
Predicted	Mouse, Rabbit, Pig, Dog
Host	Goat
Clonality	Polyclonal
Concentration	0.5 mg/ml
Isotype	IgG
Calculated MW	23264

PSMB9 Antibody (internal region) - Additional Information

Gene ID 5698

Other Names

Proteasome subunit beta type-9, 3.4.25.1, Low molecular mass protein 2, Macropain chain 7, Multicatalytic endopeptidase complex chain 7, Proteasome chain 7, Proteasome subunit beta-1i, Really interesting new gene 12 protein, PSMB9, LMP2, PSMB6i, RING12

Format

0.5 mg/ml in Tris saline, 0.02% sodium azide, pH7.3 with 0.5% bovine serum albumin

Storage

Maintain refrigerated at 2-8°C for up to 6 months. For long term storage store at -20°C in small aliquots to prevent freeze-thaw cycles.

Precautions

PSMB9 Antibody (internal region) is for research use only and not for use in diagnostic or therapeutic procedures.

PSMB9 Antibody (internal region) - Protein Information

Name PSMB9

Synonyms LMP2, PSMB6i, RING12

Function

The proteasome is a multicatalytic proteinase complex which is characterized by its ability to cleave peptides with Arg, Phe, Tyr, Leu, and Glu adjacent to the leaving group at neutral or slightly

basic pH. The proteasome has an ATP-dependent proteolytic activity. This subunit is involved in antigen processing to generate class I binding peptides. Replacement of PSMB6 by PSMB9 increases the capacity of the immunoproteasome to cleave model peptides after hydrophobic and basic residues.

Cellular Location

Cytoplasm {ECO:0000255|PROSITE-ProRule:PRU00809}. Nucleus

PSMB9 Antibody (internal region) - Protocols

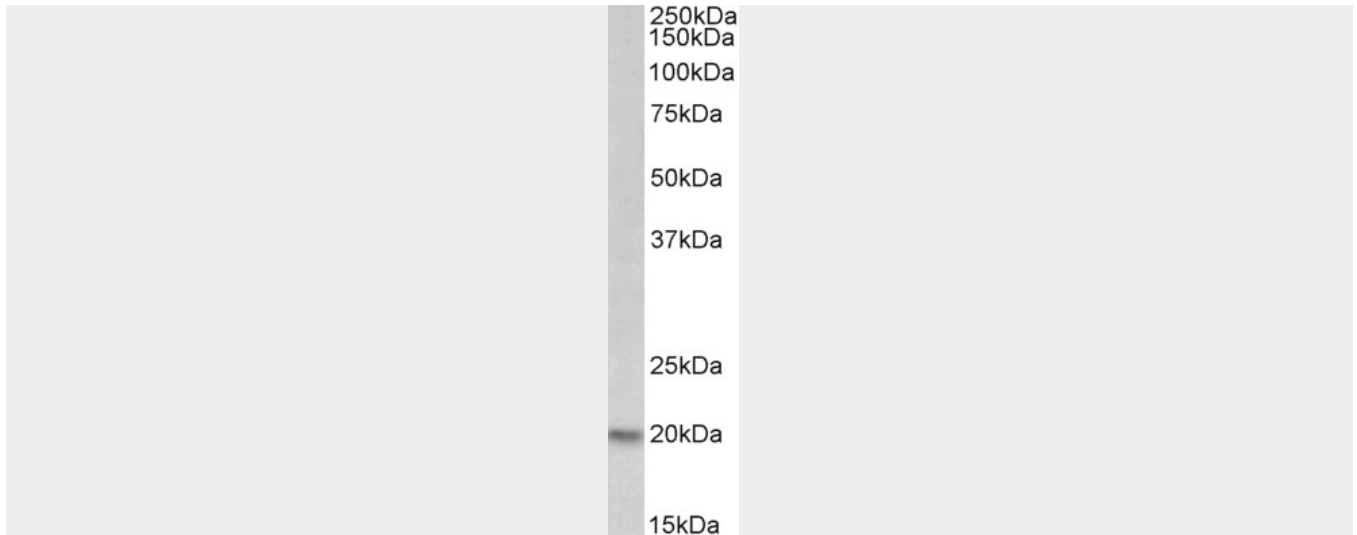
Provided below are standard protocols that you may find useful for product applications.

- [Western Blot](#)
- [Blocking Peptides](#)
- [Dot Blot](#)
- [Immunohistochemistry](#)
- [Immunofluorescence](#)
- [Immunoprecipitation](#)
- [Flow Cytometry](#)
- [Cell Culture](#)

PSMB9 Antibody (internal region) - Images



AF3336a (1 μ g/ml) staining of Human Thymus lysate (35 μ g protein in RIPA buffer). Primary incubation was 1 hour. Detected by chemiluminescence.



AF3336a (0.3 $\mu\text{g/ml}$) staining of Rat Thymus lysate (35 μg protein in RIPA buffer). Primary incubation was 1 hour. Detected by chemiluminescence.

PSMB9 Antibody (internal region) - References

PSMB8 (LMP7) but not PSMB9 (LMP2) gene polymorphisms are associated to pigeon breeder's hypersensitivity pneumonitis. Camarena A, Aquino-Galvez A, Falfán-Valencia R, Sánchez G, Montañó M, Ramos C, Juárez A, García-de-Alba C, Granados J, Selman M. Respiratory medicine 2010 Feb : . PMID: 20153157